



**ETSI**  
**TECHNICAL COMMITTEE**  
**REFERENCE TECHNICAL REPORT**

**TCR-TR 040**

September 1995

---

Source: ETSI TC-NA

Reference: DTR/NA-071301

ICS: 33.020

**Key words:** UPT, information flows

**Universal Personal Telecommunication (UPT);  
Phase 1;  
Requirements on Information Flows (IFs) and protocols**

**ETSI**

European Telecommunications Standards Institute

**ETSI Secretariat**

**Postal address:** F-06921 Sophia Antipolis CEDEX - FRANCE

**Office address:** 650 Route des Lucioles - Sophia Antipolis - Valbonne - FRANCE

**X.400:** c=fr, a=atlas, p=etsi, s=secretariat - **Internet:** secretariat@etsi.fr

Tel.: +33 92 94 42 00 - Fax: +33 93 65 47 16

---

**Copyright Notification:** No part may be reproduced except as authorized by written permission. The copyright and the foregoing restriction extend to reproduction in all media.

© European Telecommunications Standards Institute 1995. All rights reserved.



## Contents

Foreword .....	5
1 Scope .....	7
2 References .....	7
3 Symbols and abbreviations .....	7
3.1 Symbols .....	7
3.2 Abbreviations .....	8
4 General .....	9
4.1 Assumptions .....	9
4.2 General comments .....	10
4.3 Organization of UPT sequences .....	11
5 Common sequences .....	12
5.1 Access, identification and authentication .....	12
5.2 Feature request identification .....	19
5.3 Release of the calling user .....	21
6 Personal mobility .....	24
6.1 Registration for incoming calls .....	24
6.2 Deregistration for incoming calls .....	30
6.3 Reset for incoming calls .....	33
7 Call handling .....	33
7.1 Outgoing UPT call .....	33
7.2 Incoming UPT call .....	42
8 Service profile management .....	46
8.1 Service profile interrogation .....	46
8.2 Service profile modification .....	46
Annex A (informative): Procedures .....	50
History .....	53

Blank page

## Foreword

This Technical Committee Reference Technical Report (TCR-TR) has been produced by the Network Aspects (NA) Technical Committee of the European Telecommunications Standards Institute (ETSI). It was given the classification of TCR-TR by the 20th TC Chairmens' Co-ordination (TCC) meeting and approval by the 22nd Technical Assembly (TA).

A TCR-TR is a deliverable for use inside ETSI which records output results of ETSI Technical Committee (TC) or Sub-Technical Committee (STC) studies which are not appropriate for European Telecommunication Standard (ETS), Interim European Telecommunication Standard (I-ETS) or ETSI Technical Report (ETR) status. They can be used for guidelines, status reports, co-ordination documents, etc. They are to be used to manage studies inside ETSI and shall be mandatorially applied amongst the concerned TCs. They shall also be utilized by the TC with overall responsibility for a study area for coordination documents (e.g. models, reference diagrams, principles, structures of standards, framework and guideline documents) which constitute the agreed basis for several, if not all, TCs and STCs to pursue detailed standards.

Blank page

## 1 Scope

This Technical Committee Reference Technical Report (TCR-TR) gives a description of the Information Flows (IFs) and the procedures associated with the Universal Personal Telecommunication (UPT) user procedures for phase 1 defined in: NA-TR 007 [2].

## 2 References

This TCR-TR incorporates by dated and undated reference, provisions from other publications. These references are cited at the appropriate places in the text and the publications are listed hereafter. For dated references, subsequent amendments to or revisions of any of these publications apply to this TCR-TR only when incorporated in it by amendment or revision. For undated references the latest edition of the publication referred to applies.

- [1] NA-TR 004: "Universal Personal Telecommunication (UPT); Phase 1 (restricted UPT service scenario); Service aspects: Guidelines".
- [2] NA-TR 007: "Universal Personal Telecommunication (UPT); Phase 1 (restricted UPT service scenario) User procedures and user states".
- [3] NA-TR 013: "Universal Personal Telecommunication (UPT); Phase 1: Architecture and functionalities for interworking".
- [4] ETS 300 391-1: "Universal Personal Telecommunication (UPT); Specification of the security architecture for UPT phase 1; Part 1: Specification".
- [5] ETS 300 374-1: "Intelligent Network (IN); Intelligent Network Capability Set 1 (CS1); Core Intelligent Network Application Protocol (INAP); Part 1: Protocol specification".
- [6] ITU-T Recommendation Q.1214: "Distributed functional plane for intelligent network CS-1".
- [7] ITU-T Recommendation Q.1218: "Interface Recommendation for intelligent network CS-1".

## 3 Symbols and abbreviations

### 3.1 Symbols

For the purposes of this TCR-TR, the following symbols apply:

- IN Information Flows
- - - - - Network signalling
- . . . . . Inband user signalling and interactions
- \* header or separator
- # trailer or end of sequence
- ( ) character not mandatory

### 3.2 Abbreviations

For the purposes of this TCR-TR, the following abbreviations apply:

#### IFs:

APPLYCHG	Apply Charging
APPLYCHGRPT	Apply Charging Report
ARI	Assist Request Instruction
COLL-UI	Collected User Information
CONNTORES	Connect to Resource
DISCFWDCONN	Disconnect Forward Connection
ETC	Establish Temporary Connection
EVREPBCSM	Event Report Basic Call State Machine
FURNCHGINFO	Furnish Charging Information
INITIALDP	Initial Detection Point
P&C	Prompt and Collect User Information
PLAYANN	Play Announcement
REQREPBCSM	Request Report Basic Call State Machine Event
SRFRPT	Specialized Resource Function Report

#### Functional Entities:

CCF	Call Control Function
SCF	Service Control Function
SDFh	Service Data Function in the user's home network
SDFo	Service Data Function in the originating network
SMF	Service Management Function
SRF	Specialized Resource Function
SSF	Service Switching Function

#### Other abbreviations:

BCSM	Basic Call State Model
CLI	Calling Line Identification
DTMF	Dual Tone Multi-Frequency
ESC	Escape Code
FC	Feature Code
IF	Information Flow
IP	Intelligent Peripheral
PIN	Personal Identification Number
PUI	Portable User Identity
SPIN	Special Personal Identification Number
UPT	Universal Personal Telecommunication
User A	Calling User
User B	Called User



## 4 General

### 4.1 Assumptions

The following assumptions have been made:

- a) inband Dual Tone Multi-Frequency (DTMF) interaction with analogue users;
- b) automatic calling line identification may exist as an option;
- c) authentication of the calling user is entirely controlled from the home network. This includes manual/weak and automatic/strong authentication. In particular, in manual authentication the counting of the number of attempts is done by a counter in the home network;
- d) automatic calling line identification may exist as an option;
- e) unsuccessful call attempts such as premature release, release by the IN-network, wrong numbering or the use by the user of an Escape Code (ESC) are not exhaustively investigated;
- f) operations are used to require the Service Switching Function (SSF) to prepare call or request records:
  - records sent from SSF for off-line processing;
  - records returned to Service Control Function (SCF) and sent to Service Management Function (SMF) for off-line processing;
  - records returned to SCF and sent to Service Data Function (SDF) for on-line processing.
- g) the follow-on procedure can only be offered if the SSF receives an explicit Clear Back signal from the outgoing circuit when the called user hangs up;
  - the B-connection is released immediately (B-party re-answer is not offered);
- h) furthermore, in phase 1, all user related data is located in one single data base in the home network: SDFh. (No transfer of data between networks):
  - registration data (in SDFh) is thus updated either locally in the home network or from the originating/visited network;
  - remote registration to a third network is not allowed;
- i) IN-network interworking capabilities are restricted to the access of the SDF of the home network of User A or User B (SDFhA, SDFhB) from the SCF of the originating/visited network SCFo.

## 4.2 General comments

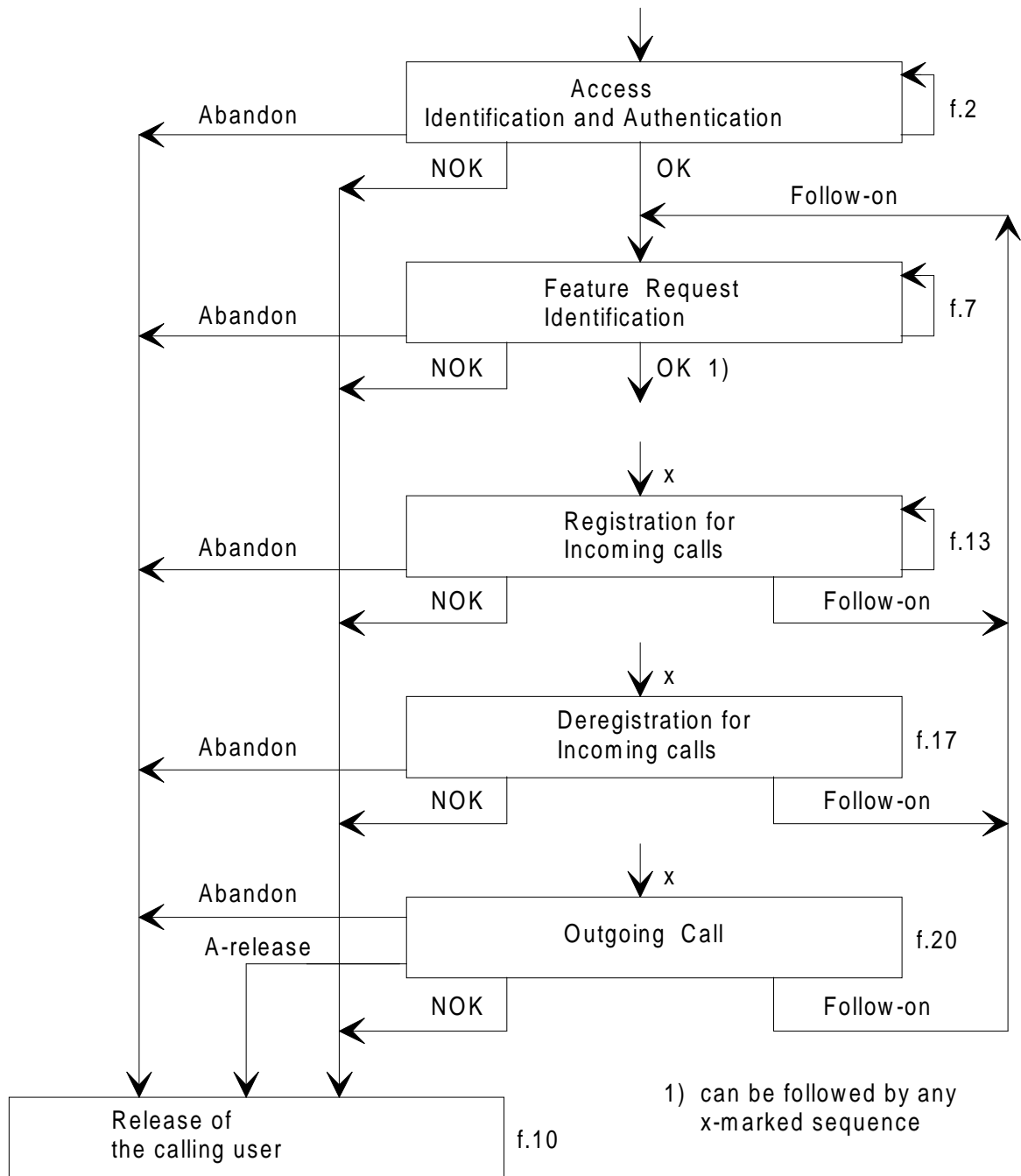
- 1) The IFs between SCF and SDF are used in conformance with the CS-1 enhancements specified in the "frozen" version of the ITU-T Recommendations Q.1214 [6] and Q.1218 [7].
- 2) In many procedures, the user is guided by prompts. It is assumed that if the user does not react within a given time or after a certain number of prompt repetitions a forced network release will take place.
- 3) At the end of entries with non-fixed length (numbers, identities, Personal Identification Number (PIN), etc.) the user may dial a flag: (#). If the user doesn't enter a #, end of entry will be determined by a time-out followed in relevant cases by a prompt.  
A separator: (\*) may also be used between entries to enable combination of entries in one sequence. Some examples are given in annex A.  
In this way, some intermediate prompts could be overridden and it would result in quicker and more user-friendly service provision.  
However, certain prompts cannot be overridden and will not be interrupted e.g. denied authentication.  
In certain procedures, e.g. registration and service profile modification, the user may enter an ESC to return to the choice of feature. The use of ESC could be extended to other procedures. However this needs further study.  
The content of the announcements given to the user, as shown in the diagrams, should only be regarded as examples.  
Whenever possible a format check is applied to user entries.
- 4) To prevent the service/network from being misused, e.g. abnormal number of retries after a request rejection, the network may release the user.  
This function is carried out through a transaction based counter in the SCF.  
The counter is incremented for every unsuccessful attempt (authentication, user requests, call attempts etc.). This includes also entries with a wrong format.  
The counter is reset at the end of each transaction.
- 5) Whether successful or not a trace of all user requests and call attempts should be kept on records at the request of the SCF.  
Primarily the records will be used for charging but could also be used for other purposes like observation, fraud tracking and statistics.  
Parts of the records may be operator specific.  
To control record generation, two operations can be used depending on where the charging point resides in the network:
  - "FurnishChargingInformation" is used if call record is generated at SSF;
  - "ApplyCharging" is used if the call record is generated at SSF and collected by the SCF;
  - "ApplyCharging" is used when real-time transfer of charging information is necessary.

To provide for the most accurate and complete content of these records as the request progresses and to record different legs of service logic in a call session, both operations may be issued several times.  
However, when an "ApplyChargingReport" is pending, no further "ApplyCharging" operation can be sent until "ApplyChargingReport" is received in the SCF.  
Records collected by the SCF may be used for real-time charging.

### 4.3 Organization of UPT sequences

Figure 1 gives an example of how some sequences and procedures may be organized to form a complete service.

The detailed content of the procedures is given in the following subclauses.



NOTE: Other x-marked sequences, like service profile modification, PIN change procedure can be included and processed in the same way as any x-marked sequence.

Figure 1: Organization of UPT sequences

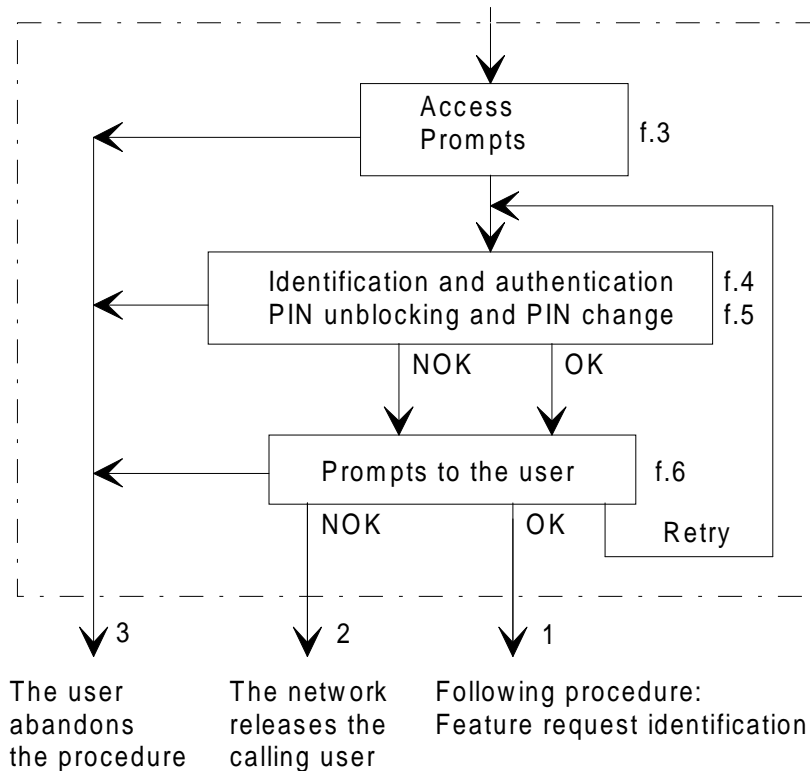
## 5 Common sequences

This clause regroups sequences of IFs used in conjunction with several procedures.

Only the value of the Information Elements contained in the IFs may vary.

### 5.1 Access, identification and authentication

Most UPT procedures starts with a user request followed by an identification and an authentication. The organization of these sequences is given in the block diagram of figure 2.



**Figure 2: Access, identification and authentication**

The procedure includes the possibility for the user to make several attempts (retries).

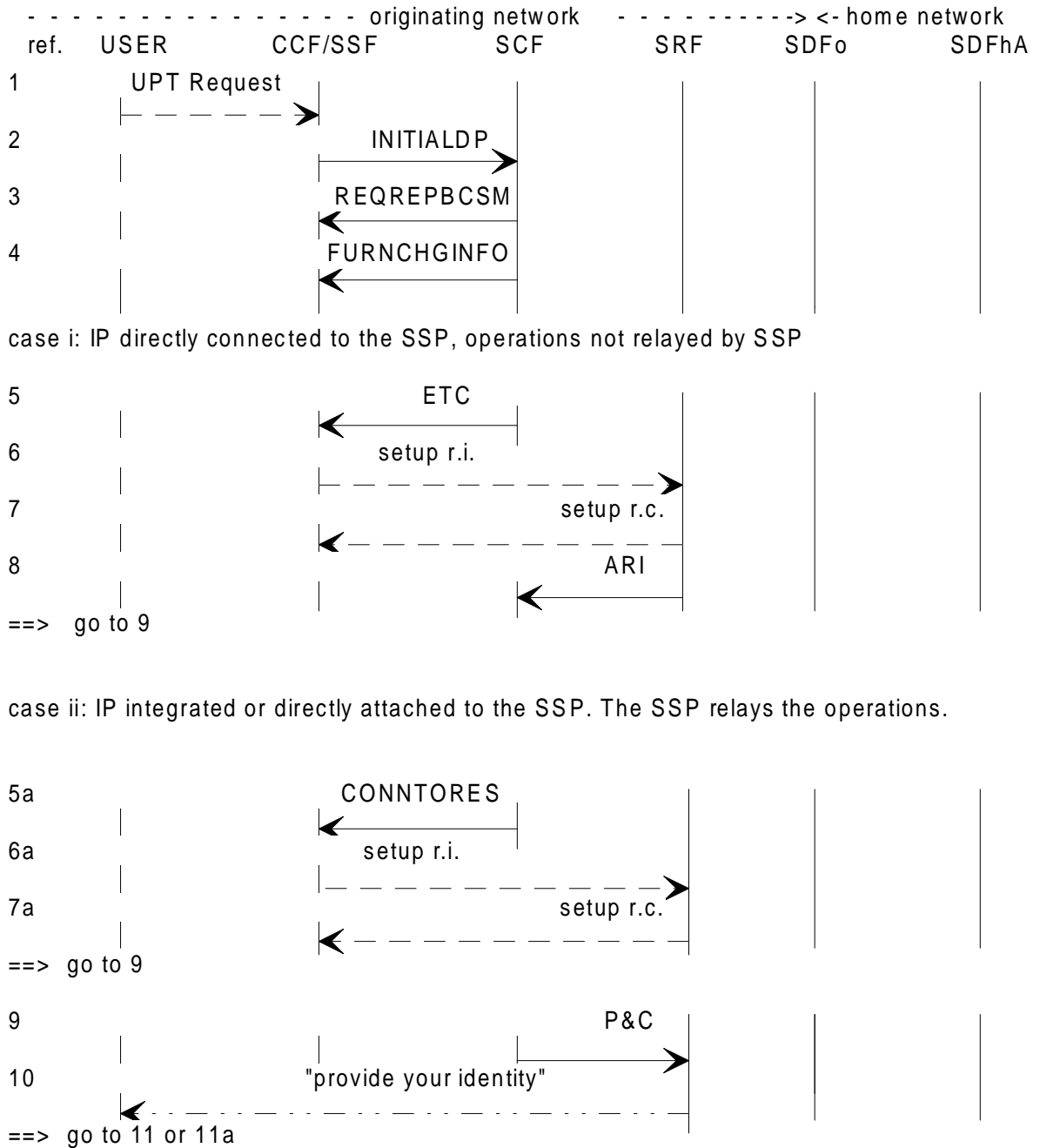
PIN unblocking and PIN change can be associated with the Manual Authentication procedure only.

Prompts are given to the user after each attempt according to the result of the procedure and allowed service options.

The logical outputs of the procedure are:

- 1) OK: proceed to next procedure;
- 2) NOK: the user is released by the network after a prompt:
  - when the last permitted attempt has failed;
  - when a given number of rejected requests is reached;
  - (protection against misuse through a transaction based counter in SCF).
- 3) the user abandons the request (in any state).

Access and prompts



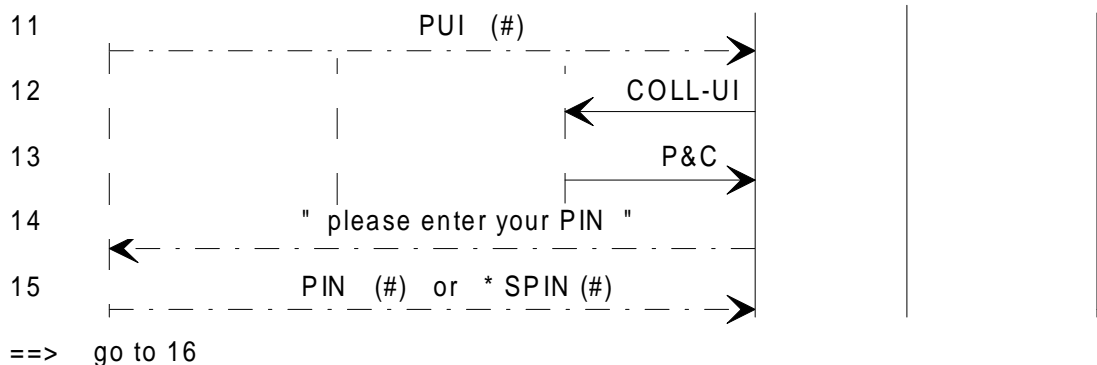
NOTE: For simplicity, the two Specialized Resource Function (SRF) connection scenarios - case i and ii - will not be reproduced further in this TCR-TR.

**Figure 3: Access and prompts**

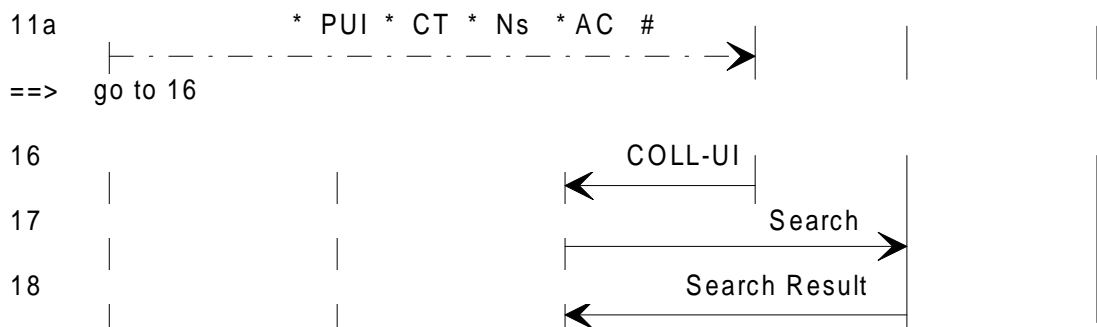
Identification and Authentication

----- originating network ----- -> <- home network  
 ref. USER CCF/SSF SCF SRF SDFo SDFhA

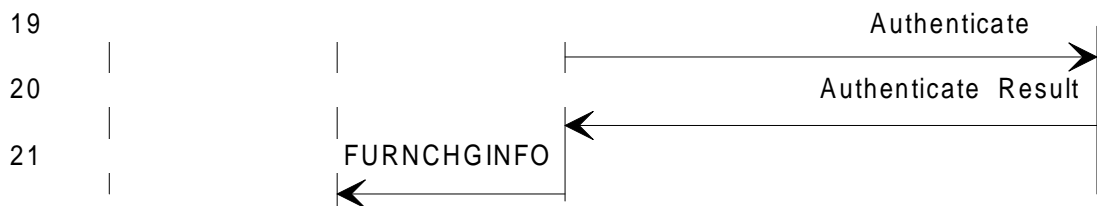
Manual procedure (simple PIN):



Automatic procedure (strong one-way):



==> If the local check fails go to 21, else:  
 ==> If the user enters \* SPIN in place of PIN (manual authentication) go to 35, else go to 19:



==> If authentication is successful, go to 51, else:  
 ==> Authentication has failed. If another attempt may take place go to 61  
 ==> If last permitted attempt fails go to 31  
 ==> If the local maximum number of rejected requests is reached go to 71  
 ==> If authentication is not possible (failed local check) go to 91

NOTE: The Special Personal Identification Number (\*SPIN) sequence is accepted by the SDFhA only when the Portable User Identity (PUI) is blocked.

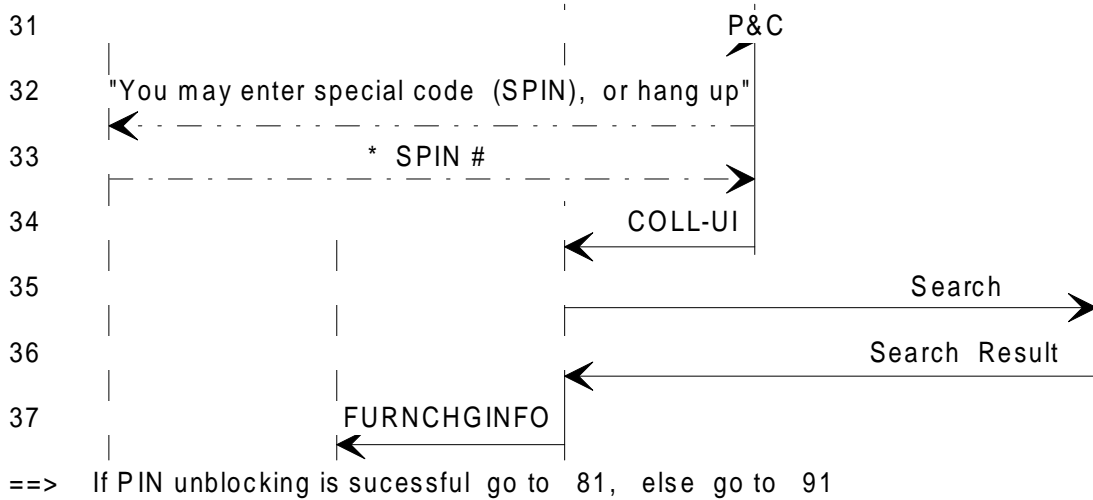
Entering the \*SPIN in place of a valid PIN in other situations will result in a failed authentication attempt, counted by the authentication counter as any other failed attempt.

**Figure 4: Identification and authentication**

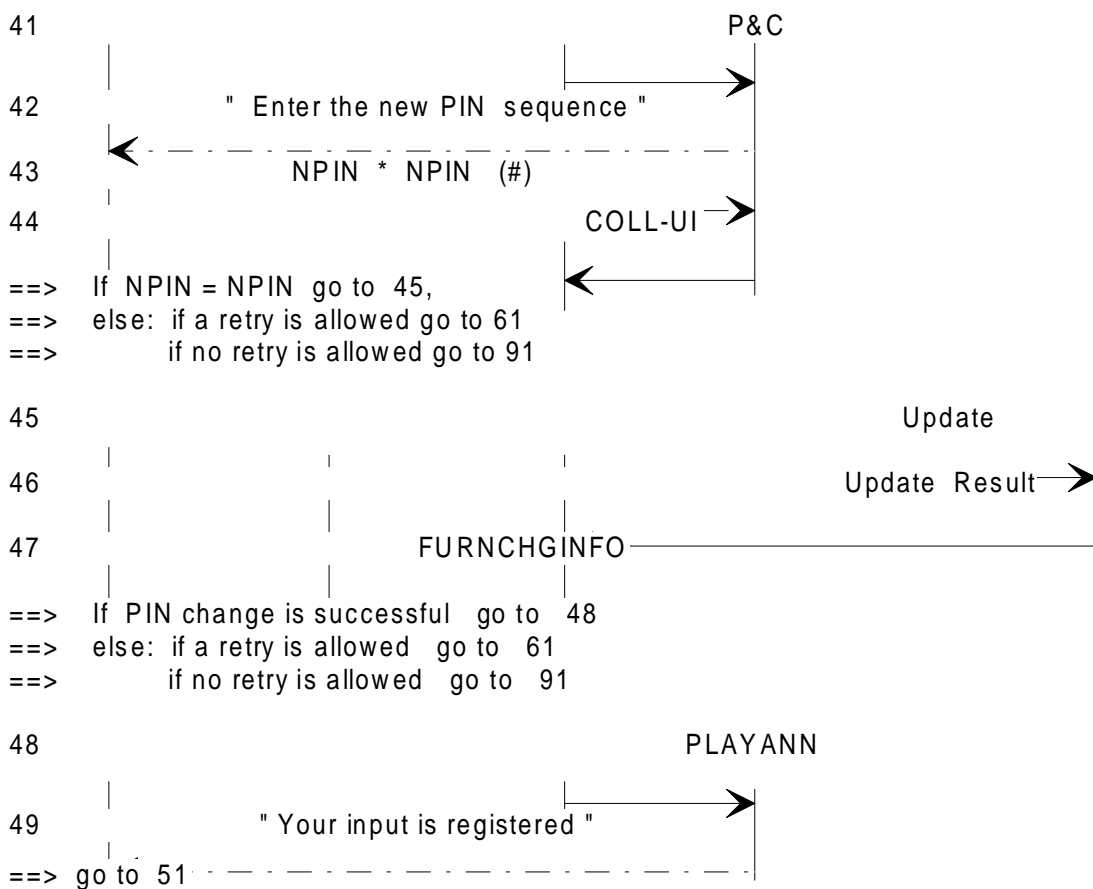
*PIN unblocking and PIN change*

----- originating network -----> <----- home network  
 ref. USER            CCF/SSF            SCF            SRF            SDFo            SDFhA

**PIN unblocking:**



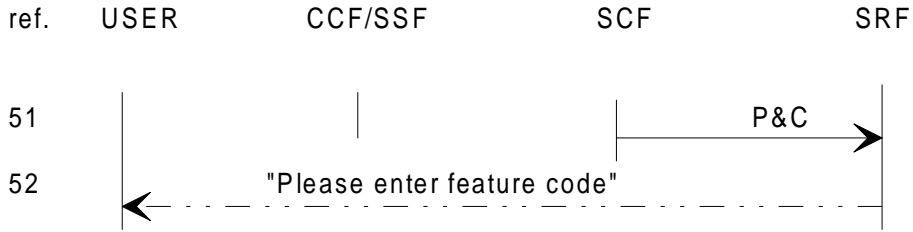
**PIN change (only for manual authentication):**



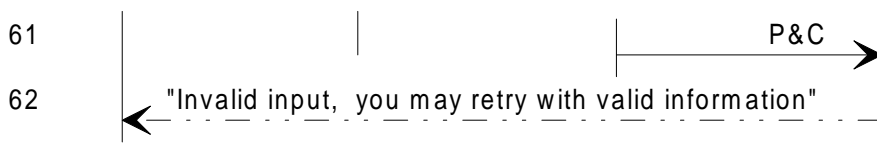
NOTE: PIN unblocking and PIN change procedures can only be associated with the manual authentication. The PIN change procedure may be offered as an independent procedure with a specific Feature Code (FC). See annex A, figure A.1.

**Figure 5: PIN unblocking and PIN change**

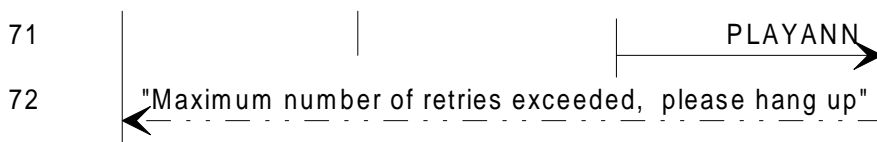
Prompts to the user



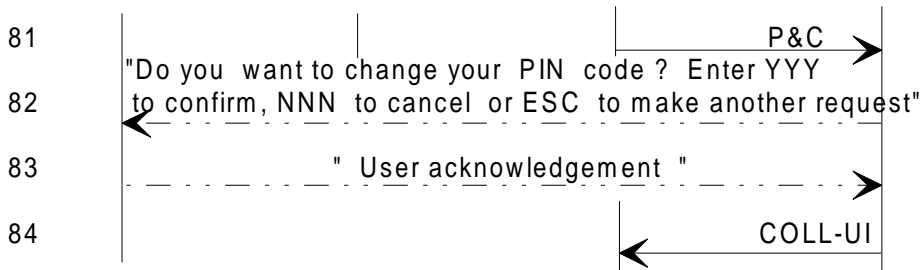
Logical output 1: ==> next procedure: *Feature Request Identification*



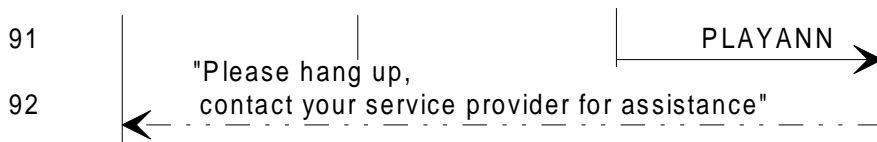
Retry: ==> go to 11, 11a, 31 or, after a PIN change only, 43  
Logical output 2/3: ==> go to *Release of the calling user*



Logical output 2/3: ==> go to *Release of the calling user*



If ESC or NNN : go to 51, else go to 41



Logical output 2/3: ==> go to *Release of the calling user*

NOTE: After any prompt the user may abandon: logical output 3, or not react within a given time: logical output 2.

Figure 6: Prompts to the user



**Notes on access, identification and authentication.**

IF ref.:

- 1, 2: The UPT request contains information that enables Call Control Function/Service Switching Function (CCF/SSF) to trigger "Initial Detection Point".
- 3: "Request Report BCSM Event" contains the list of events and their monitoring mode (may be useless if the DPs are statically armed).
- 4: The "FurnishChargingInformation" operation is sent to instruct SSF to create a call record for the following user request.
- 5-8: The SSF is ordered to connect an SRF using the ETC operation. The ARI operation is used (SCF-SRF operations not relayed by SSF).
- 5a-7a: The SSF is ordered to connect an SRF using "Connection to Resource". In this case the SCF-SRF operations are relayed by the SSF.
- 9, 10: "Prompt and Collect User Info" enables the SRF to prompt the user.
- 11: In manual procedure the user sends the PUI number.
- To avoid to wait for end of dialling recognition by a time-out, the user may use a star: (\*) to speed up the procedure and then dial the PIN in the same sequence.
  - After the PIN, a square: (#) may be dialled to terminate the sequence.
- 12: "Collected Info" to SCF contains information received from the user.
- 13-15: If the user does not dial the (#) and waits, he/she is prompted to send the PIN. The PIN request is systematic.
- 11a: In automatic procedure the subscription device sends all authentication information in one string.
- The star (\*) is used as a separator.  
At the head of the sequence, the (\*) enables the SCF and the SDFhA to recognize an automatic authentication sequence.
- 16: The complete string of information is received in the SCF, a format check is applied.
- NOTE 1: A local black-listing of users misusing the service may exist. However, this has no impact on the IFs and is not reflected in the diagrams.
- NOTE 2: When the PUI is blocked, the user enters \*SPIN in place of the PIN. The sequence is sent to the home network for PIN unblocking. See 35-36.
- 17, 18: The SDFo query provides a local check e.g. to check if there exists particular agreements between the local service provider and the user's home provider (Agreement check).
- SDFh address and service specific data e.g. maximum global counter value may also be retrieved with this local check.
- 19, 20: The received information is sent to SDFh in one string for authentication.
- SDFh monitors and keeps a count of the number of attempts.
  - SDFh sends the result of authentication back to SCF.

21: The "FurnishChargingInformation" operation is sent to instruct SSF to update the record.

NOTE 3: According to the phase of authentication: 1st, 2nd, etc., last attempt exchanges 11 or 11a to 21 can be repeated.

31, 32: The user is informed that special unblocking code (\*SPIN) may be entered.

33-36: When the user enters the \*SPIN a check is made in the home network. If successful the user is unblocked and may proceed to other sequences.

The \* dialled before the SPIN is necessary to identify the unblocking sequence.

NOTE 4: How a successful PIN unblocking sequence resets the PIN counter in the SDFhA is for further study.

37: The "FurnishChargingInformation" operation is sent to instruct SSF to update the record.

41-46: The user is prompted to enter the special PIN change sequence.

- The PIN change sequence is sent to the home network. If the procedure is successful the user may proceed to feature identification. If not, another attempt may be allowed.

47: The "FurnishChargingInformation" operation is sent to instruct SSF to update the record.

NOTE 5: The PIN change procedure may be offered as an independent procedure with a specific FC.

48, 49: The SRF prompts the user that the PIN change is registered.

51, 52: The SRF is ordered to inform the user that authentication is successful and that feature identification may now take place.

61, 62: The SRF is ordered to inform the user that another attempt is allowed. (No reason is given).

71, 72: The SRF prompts the user that the maximum number of rejected requests is reached. (The count of the number of attempts is done in the SCF). The user is asked to hang up.

81, 84: The user is offered to change the PIN by entering a special PIN change sequence.

- According to user acknowledgement the PIN change procedure takes place or the user proceeds to feature identification.

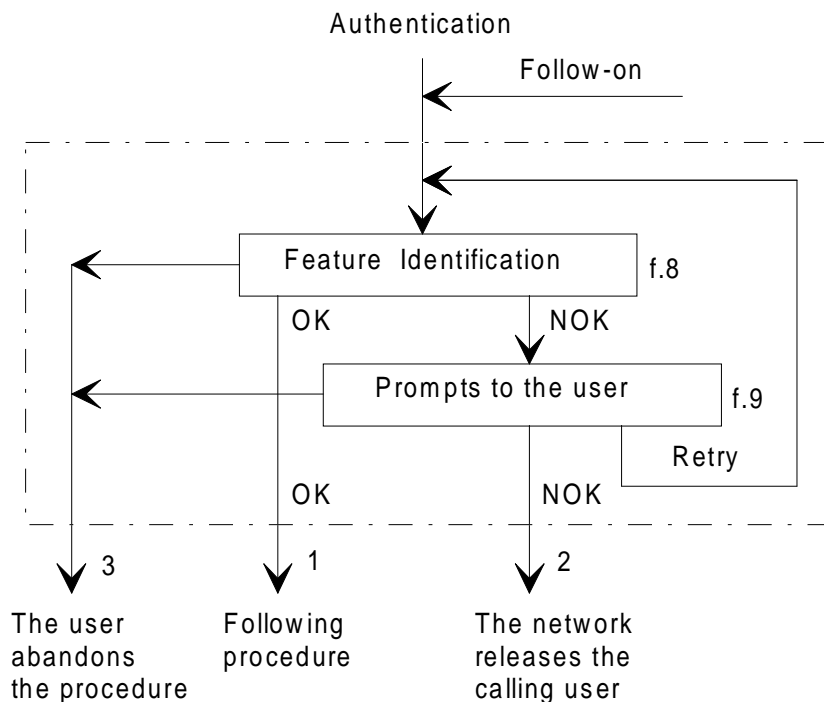
91, 92: The user is asked to hang up. No further attempt is allowed, but the line is not blocked. The user may contact the local/home provider for assistance.

## 5.2 Feature request identification

This sequence takes place:

- after a successful authentication;
- as a follow-on after any other procedure.

The organization of this sequence is given in the block diagram of figure 7.



**Figure 7: Feature request identification**

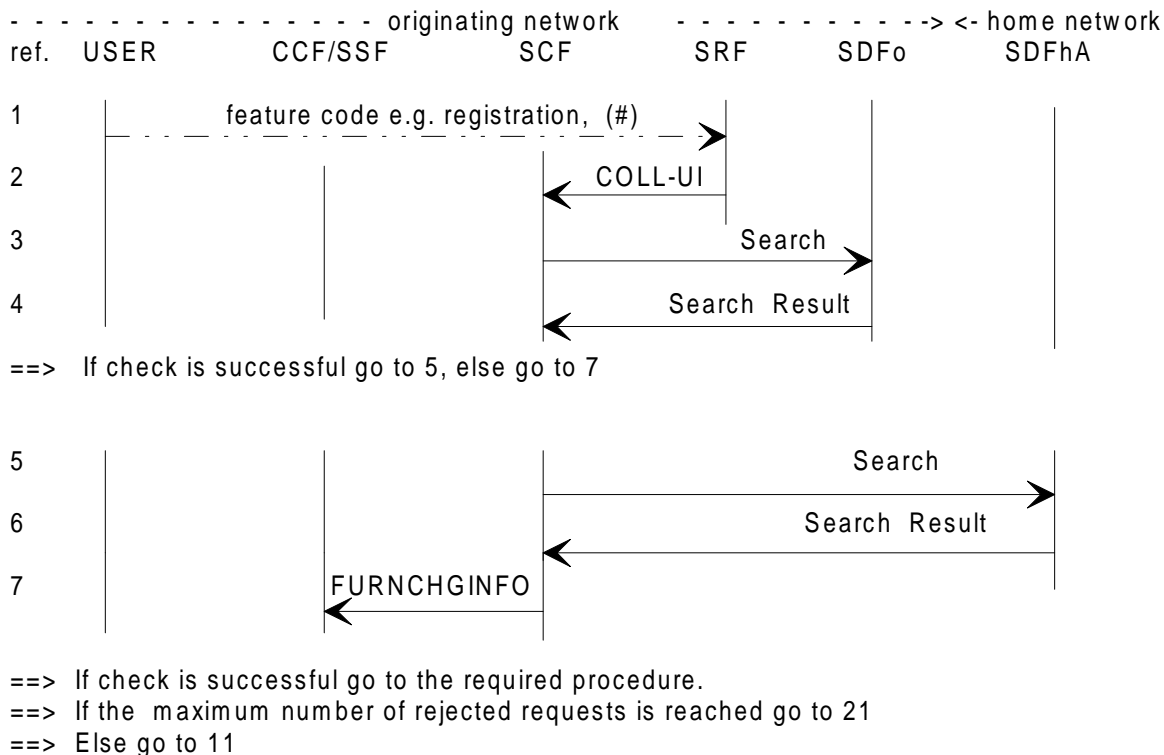
When the request is denied, the user could be allowed to request another feature (retry = follow-on).

The logical outputs of the procedure are:

- 1) OK: proceed to next procedure;
- 2) NOK: the user is released by the network, after a prompt (see note);
- 3) the user abandons the request (in any state).

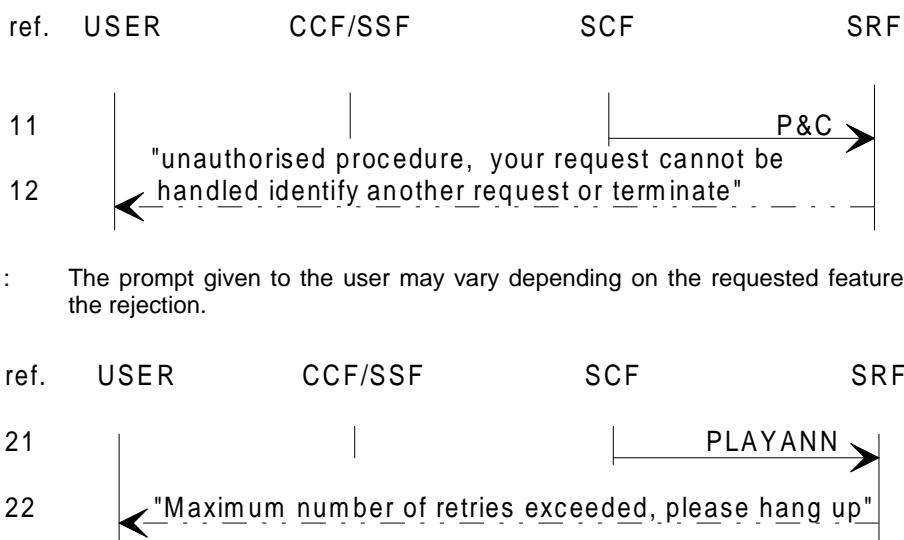
NOTE: To prevent the service/network from being misused e.g. abnormal number of retries after a request rejection, the network may release the user. This function is carried out in the SCF.

*Feature identification*



**Figure 8: Feature identification**

*Prompts to the user*



Logical output 2/3: ==> go to *Release of the calling user*

NOTE 2: After any prompt the user may abandon: logical output 3, or not react within a given time: logical output 2.

**Figure 9: Prompts to the user**

### Notes on feature request identification.

IF ref.:

- 1, 2:                   The user indicates the requested FC.
- The SRF sends the received code to the SCF. The feature request may be made in several steps.
  - A flag may be input at the end of the request. This would allow immediate input of the following information.
- 3, 4:                   The SDFo query is intended to locally check e.g. if there exists particular agreements between the local service provider and the user's home provider for that feature request. (Agreement check; may include follow-on allowance).
- 5, 6:                   The SDFh query is intended to check e.g. if the user has subscribed to the requested feature, if the request is consistent with user state. (profile check which may also contain a credit indicator).
- In the follow-on this check could be used between two sub-calls to verify if the user is allowed to continue e.g. credit check (for further study).
  - According to feature request and to inter-operator agreements, some of these checks might be superfluous.
  - When the request is not accepted another attempt could be allowed: exchanges 1-6 could be repeated after a prompt (see 11,12).
- 7:                     The "FurnishChargingInformation" operation is sent to instruct SSF to update the record or to create a new record after a follow-on.
- 11, 12:                The SRF prompts the user that the request cannot be handled. The user is asked to terminate or to request another procedure.
- NOTE:                 The prompt given to the user may vary depending on the requested feature and/or nature of the rejection.
- 21, 22:                The SRF prompts the user that the maximum number of rejected requests is reached. (The count of the number of attempts is done in the SCF). The user is asked to hang up.

### 5.3     Release of the calling user

This sequence takes place at the end of every UPT user request.

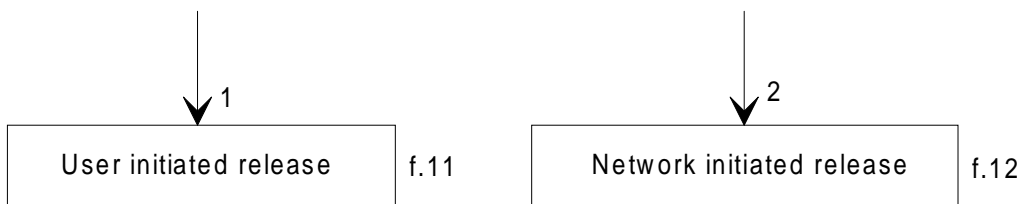
The following situations may be encountered:

- release initiated by the user hanging up spontaneously in any state, or during/consequent to the reception of an announcement. The release may also be initiated by the originating network;
- forced release initiated by the IN-node, immediately or after a prompt (possibly associated with a time out), e.g. when, following to an invitation to terminate, the user does not hang up.

Thus the release procedure has the following inputs:

- 1)    the user abandons a procedure in any state or the user hangs up during or after a prompt;
- 2)    the user is released by the IN-node.

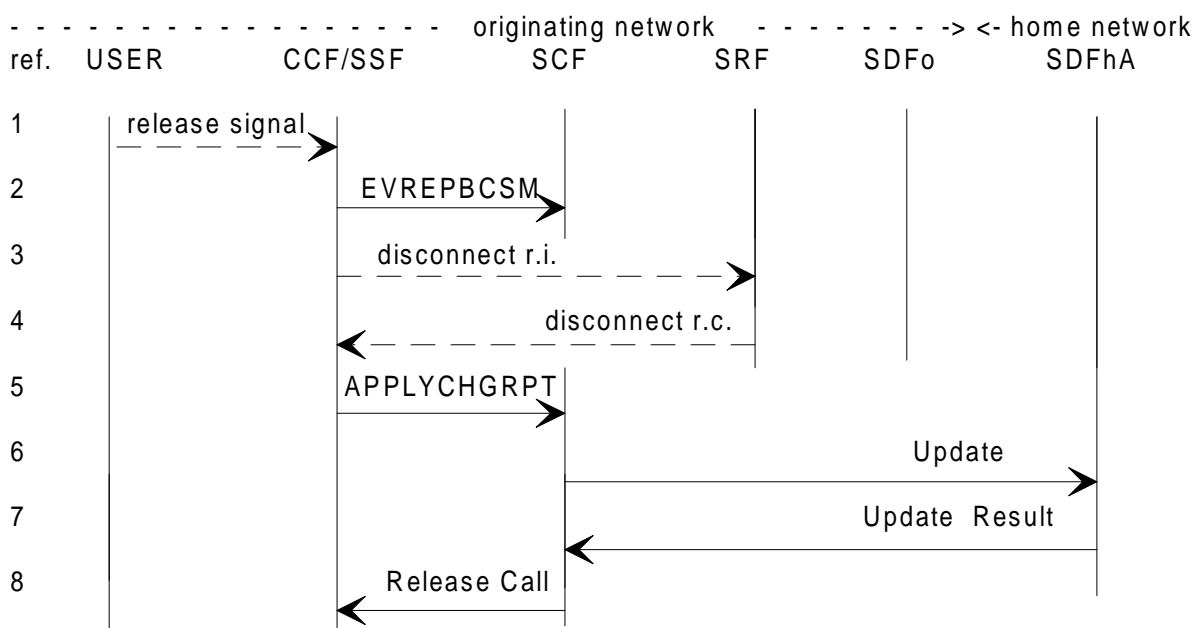
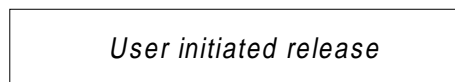
The organization of the release sequence is given in the block diagram of figure 10.



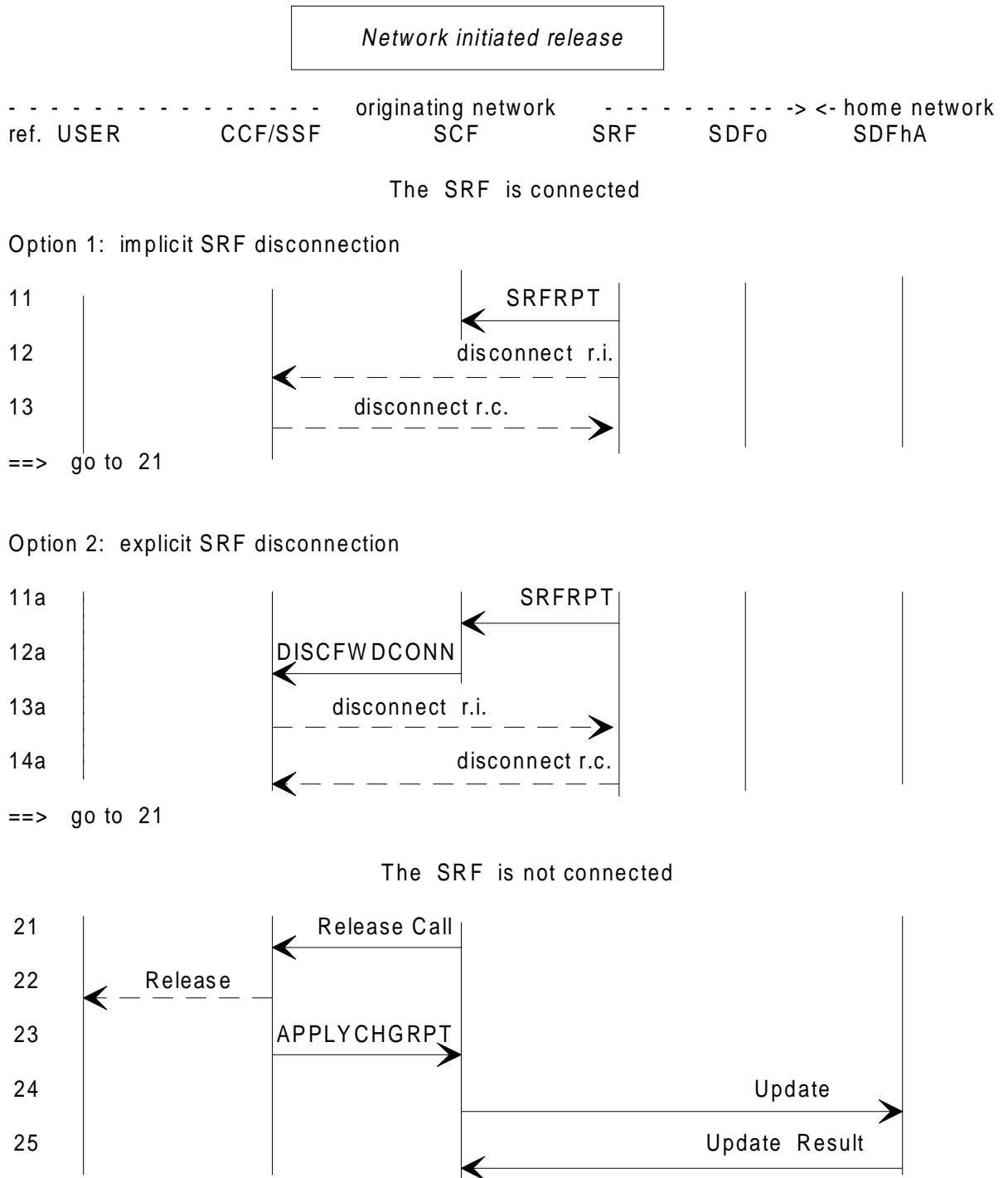
**Figure 10: Release of the calling user**

The release procedure generally includes:

- the release of all external connections: lines, circuits;
- the release of all engaged IN resources: Intelligent Peripheral (IP).



**Figure 11: A-user initiated release**



**Figure 12: Network initiated release**

**Notes on release of the calling user.**

IF ref.:

- 1, 2:                    A release signal is received from the network and sent to the SCF.
- 3, 4:                    When an SRF is connected, e.g. abandon during a prompt, SRF disconnection is initiated by the CCF.  
This sequence is network configuration dependent.

5-7: When an "ApplyCharging" has been issued, the record is returned to the SCF in a "ApplyChargingReport". The record may be sent to the SDFhA.

Other SDFs may also receive a record for e.g. split charging.  
This function needs further study.

8: When an outgoing connection exists, the "Release Call" operation may be used. This sequence is network configuration dependent.

**Option 1:**

11: When a prompt is sent to the user e.g. after follow-on, network initiated disconnection may be triggered either after a time-out or a given number of prompt repetitions. In this case an "SRF Report" is sent to SCF to indicate that call disconnection may start.

12, 13: The disconnection of the SRF is initiated by the SRF itself. (this sequence is network configuration dependent).

**Option 2:**

11a: See 11.

12a-14a: SCF orders the disconnection of the SRF. (this sequence is network configuration dependent).

21, 22: This release sequence takes place when the SRF is not connected or when no prompt is given to the user. "Release Call" initiates the forced release of the user and the release of associated connections in the calling network.

NOTE: The release sequence of any possible outgoing connection is not shown.

23-25: See 5-7.

## **6 Personal mobility**

The personal mobility procedures include:

- ***registration for incoming calls;***
- ***deregistration for incoming calls;***
- ***reset for incoming calls.***

Personal mobility procedures may take place after other procedures, but are, at least, preceded by successful:

- ***"Access, identification and authentication"*** described in subclause 5.1; and
- ***"Feature request identification"*** described in subclause 5.2.

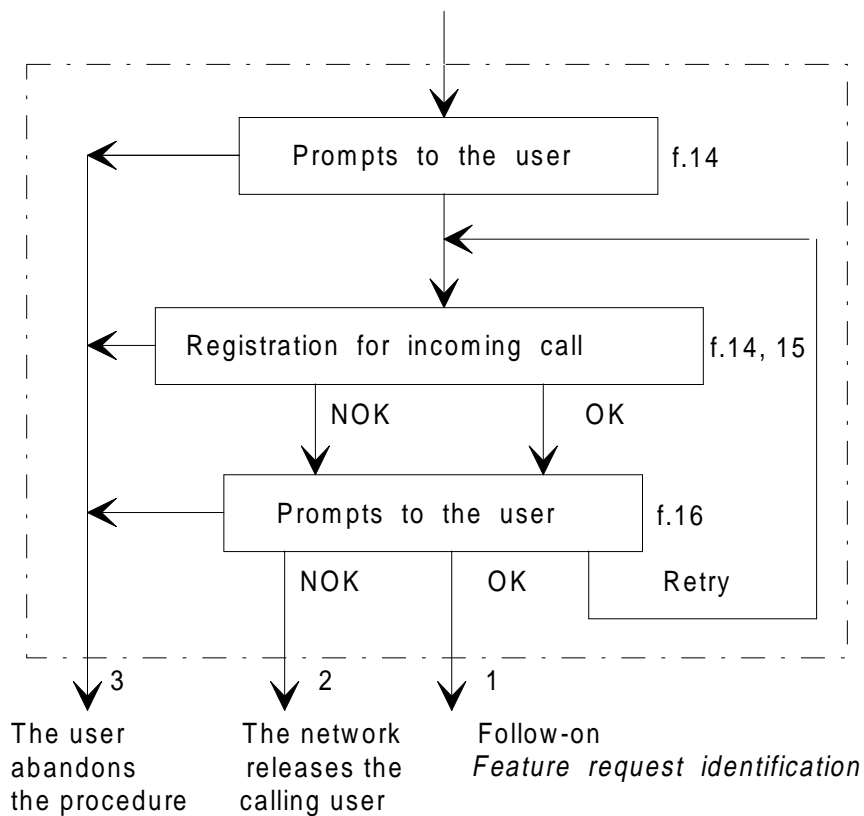
At this point the SCF has received the FC and orders the SRF to send a positive announcement to the user.

### **6.1 Registration for incoming calls**

Prerequisite sequences: Access, identification and authentication  
Feature request identification

The organization of the registration sequence is given in the block diagram of figure 13.





**Figure 13: Registration for incoming calls**

As an option, the procedure includes the possibility for the user to impose limitations/restrictions to the registration.

Prompts are given to the user according to allowed service options.

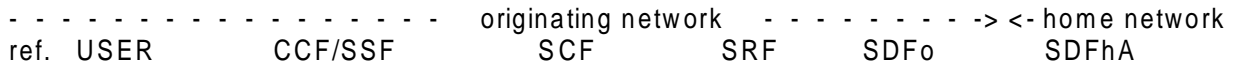
The logical outputs of the procedure are:

- 1) OK: the user is allowed to request another feature (follow-on);
- 2) NOK: the user is released by the network after a prompt (see note);
- 3) the user abandons the request (in any state).

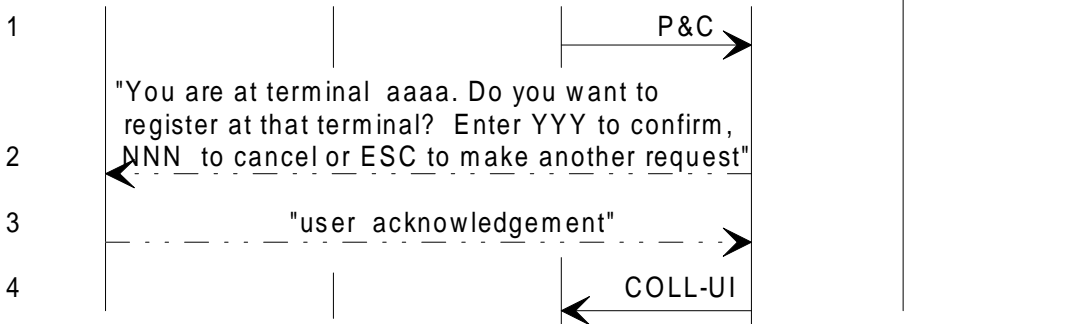
NOTE: To prevent the service/network from being misused, e.g. abnormal number of retries after a request rejection, the network may release the user.

This function is carried out in the SCF.

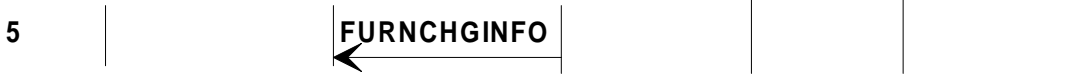
Prompts and registration for incoming call



1) In a network with automatic Calling Line Identification:



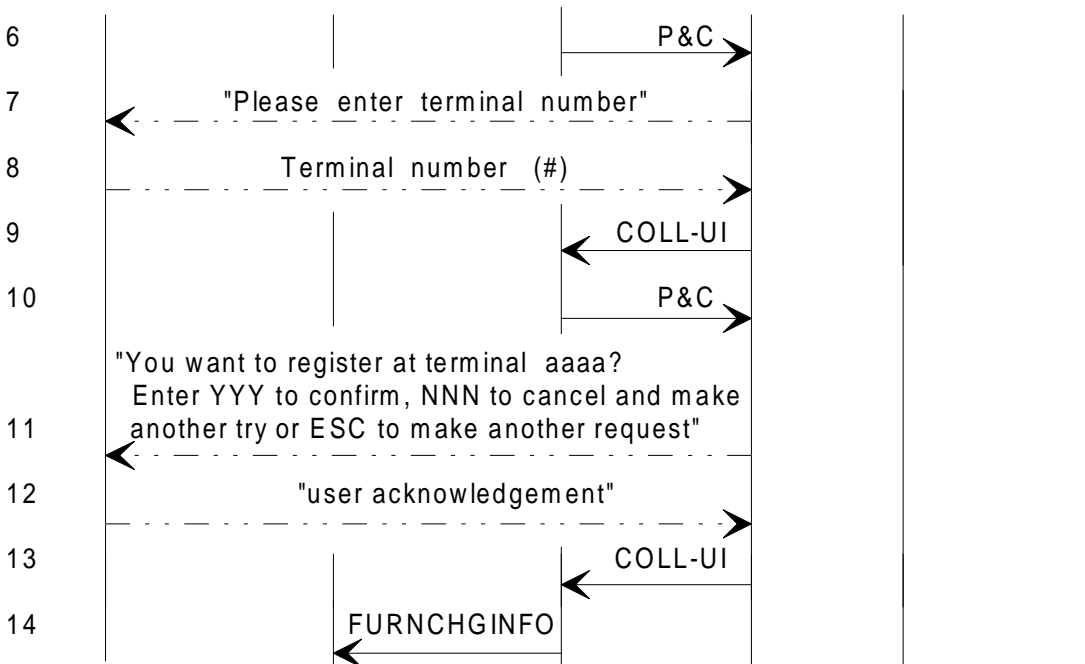
==> If the entry is NNN go to 6, else go to 5:



==> If the entry is YYY go to 15, if the entry is ESC go to 61.

==> If the maximum number of cancelled attempts is reached go to 91.

2) In a network with no Calling Line Identification:



==> If the entry is YYY go to 15,

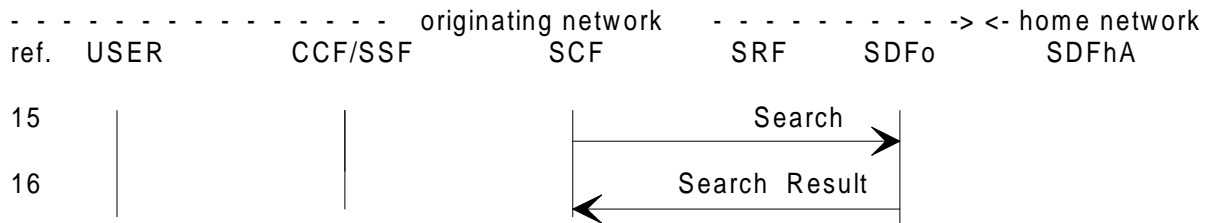
==> If the entry is NNN go to 71,

==> If the entry is ESC go to 61,

==> If the maximum number of cancelled attempts is reached go to 91.

Figure 14 (sheet 1 of 2): Prompts and registration for incoming calls

Registration for incoming calls (cntd)

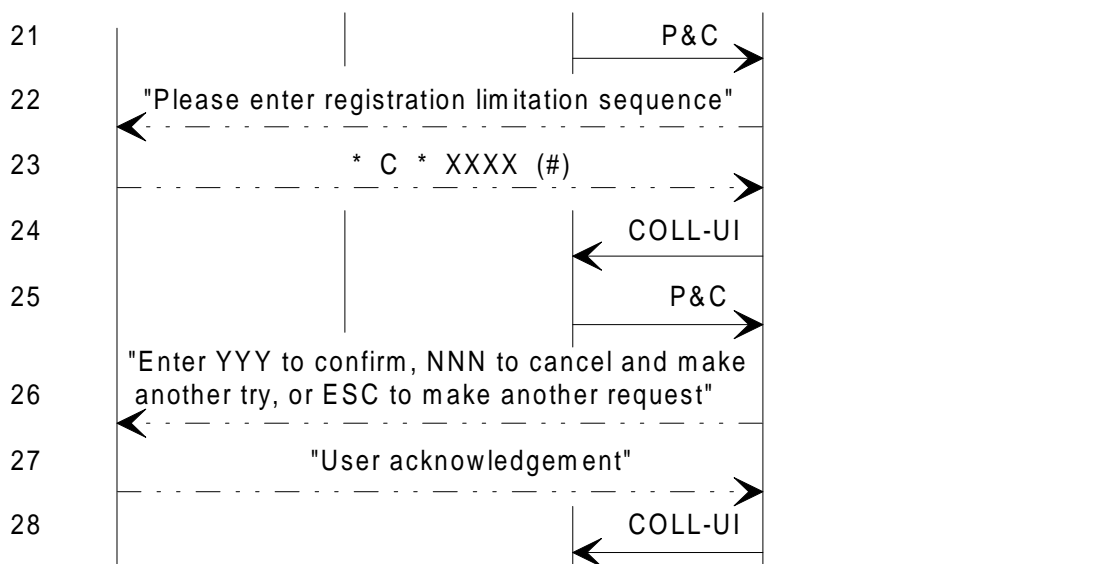


==> If check is successful go to 21, else go to 17:

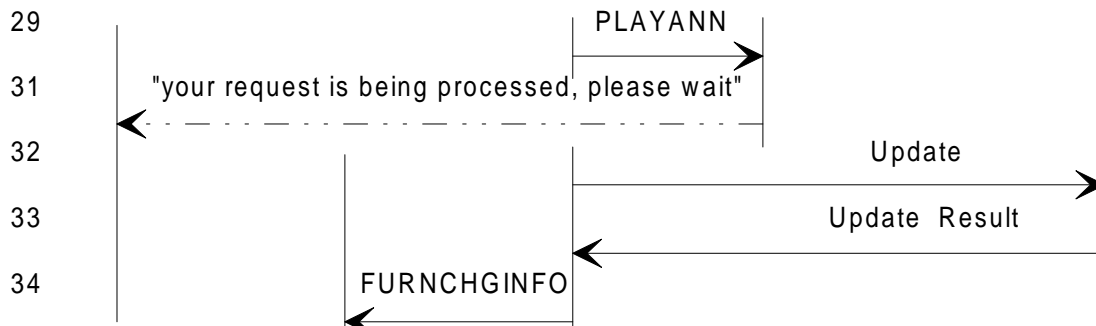


==> If the maximum number of rejected attempts is reached go to 91,  
==> else a new manual registration attempt is allowed go to 51.

Registration limitation sequence:

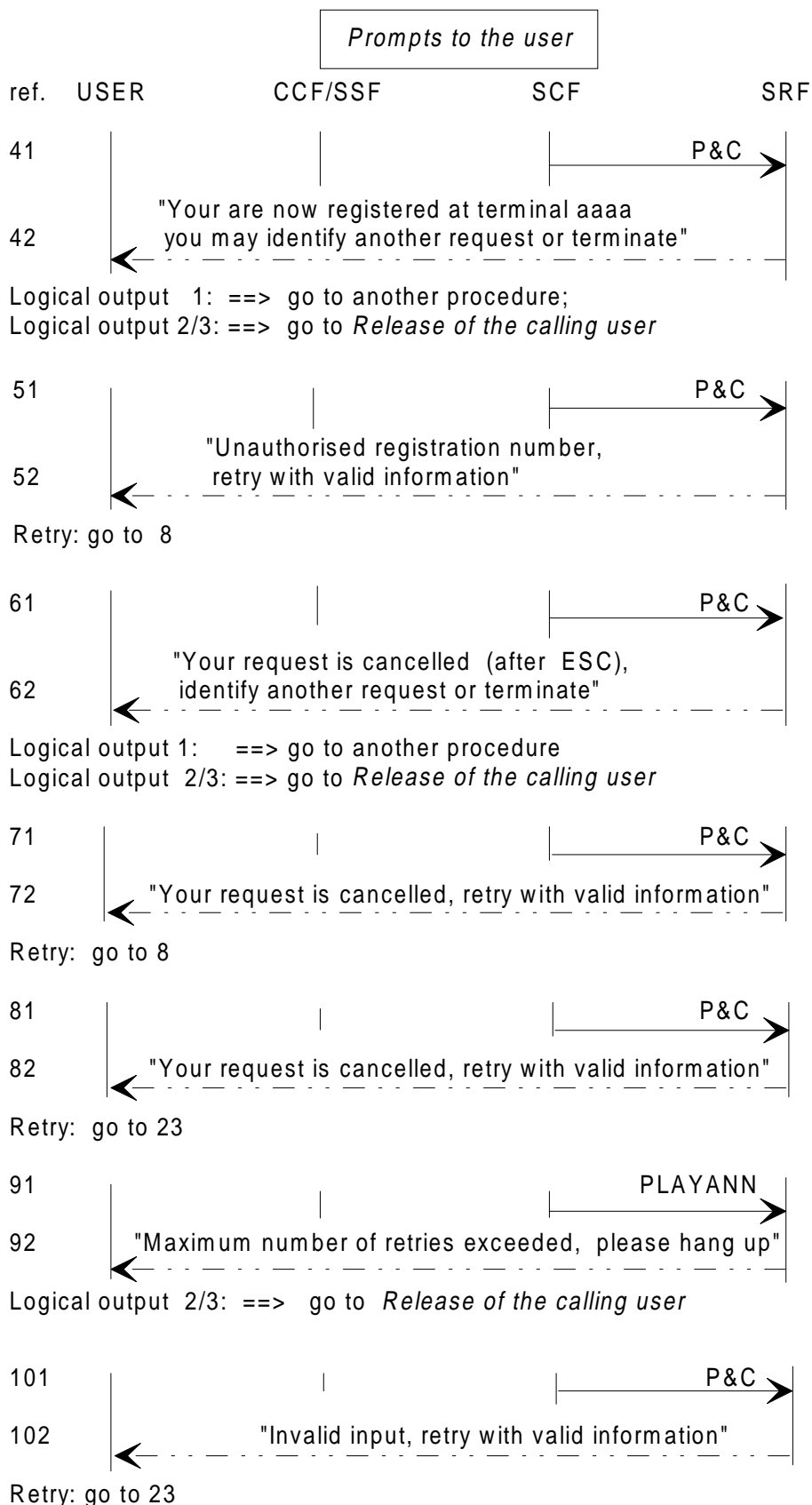


==> If the entry is YYY go to 29,  
==> If the entry is NNN go to 81,  
==> If the entry is ESC go to 61,  
==> If the maximum number of rejected attempts is reached go to 91.



==> If registration is successful go to 41  
==> If the maximum number of rejected attempts is reached go to 91,  
==> else go to 101.

Figure 14 (sheet 2 of 2): Prompts and registration for incoming calls



NOTE: After any prompt the user may abandon: logical output 3, or not react within a given time: logical output 2.

**Figure 15: Prompts to the user**

**Notes on registration for incoming calls.**

IF ref.:

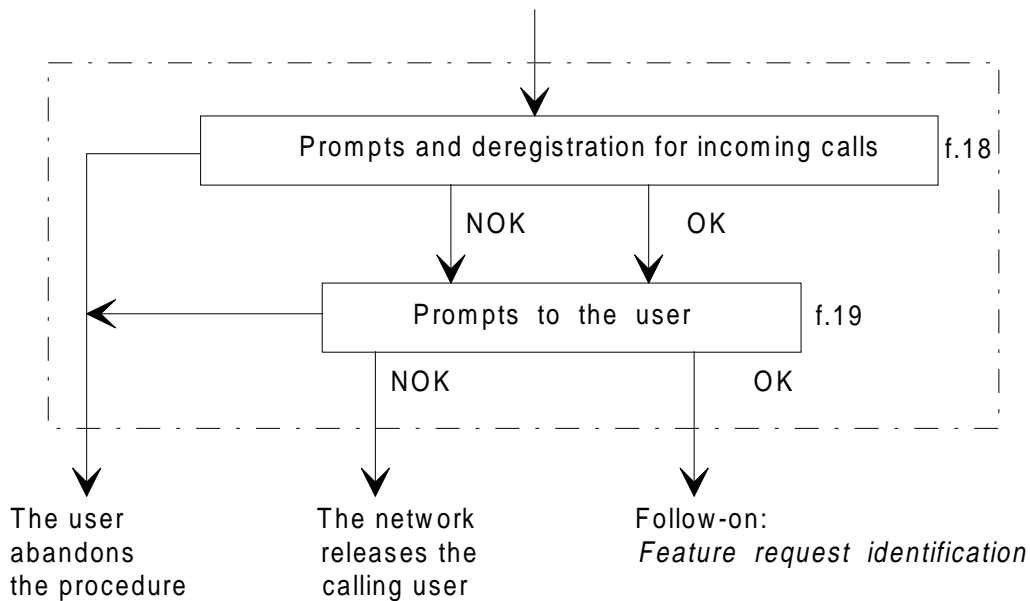
- 1-5: When Calling Line Identification (CLI) is available in the network the user must first confirm whether registration will be at that terminal or not. If yes, or in case of Escape, the "FurnishChargingInformation" is sent to instruct SSF to update the record. If not the procedure is the same as when no CLI is provided.
- 6-9: The user is prompted to enter terminal number. This can be given in different ways, depending on network capabilities. Usually a country code and a subscriber number are required. (Only the country code of the home country or of the visited country are allowed). A flag (#) may be used to indicate end of terminal identity.
- 10-13: The given terminal number is echoed and the user is requested to confirm (or reject). The SRF sends the response to the SCF.  
According to user input, terminal identification may be repeated or abandoned.
- 14: The "FurnishChargingInformation" is sent to instruct SSF to update the record.
- 15, 16: The SDFo is queried to check if any restrictions apply to the use of the given terminal number.  
:  
If the registration is denied a negative reply is sent to the SCF.
- 17: See 14.
- 21,22: The user is offered to enter a sequence of information to limit/restrict the registration.
- 23-28: The sequence contains a code (C) which indicate the nature of the limitation e.g. period of time, date, default limitation stored in the service profile or no limitation. The necessary parameters are given in a following block (XXXX). A separator \* is dialled between the two blocks.  
  
The sequence is echoed to the user for confirmation.  
According to user input, the limitation sequence may be repeated (sequence (71,72 and 23-28) or abandoned (ESC).
- NOTE 1: The originating network makes only a format check on the received sequence.
- 29-33: The SDFhA is queried to check if the given terminal number does not violate any restrictions and is updated with the new location. If the registration is denied a negative reply is sent to the SCF. A waiting prompt is given to the user.
- NOTE 2: Validation of the terminal number is for further study.
- 34: See 14.
- 41, 42 : When registration is completed successfully, the user may want another UPT feature. For this purpose the user may identify another feature request (follow-on).
- 51, 52: The SRF prompts the user that registration was rejected, another valid terminal identity could be input again.
- 61, 62: When the user cancels the request another feature request may be input (follow-on).
- 71, 72: After a negative acknowledgement, the SRF prompts the user that terminal number could be input again.

- 81, 82: After a negative acknowledgement, the SRF prompts the user that limitation sequence could be input again.
- 91, 92: The SRF prompts the user that the maximum number of rejected requests is reached. The count of the number of attempts is done in the SCF. The user is asked to hang up.
- 101, 102: The SRF prompts the user that registration was rejected, another valid terminal identity could be input again.

## 6.2 Deregistration for incoming calls

Prerequisite sequences: Access, identification and authentication  
Feature request identification

The organization of the deregistration sequence is given in the block diagram of figure 16.



**Figure 16: Deregistration for incoming calls**

Prompts are given to the user according to allowed service options.

The logical outputs of the procedure are:

- 1) OK: the user is allowed to request another feature (follow-on);
- 2) NOK: the user is released by the network after a prompt (see note);
- 3) the user abandons the request (in any state).

NOTE: To prevent the service/network from being misused, e.g. abnormal number of retries after a request rejection, the network may release the user.

This function is carried out in the SCF.

Prompts and deregistration for incomings calls

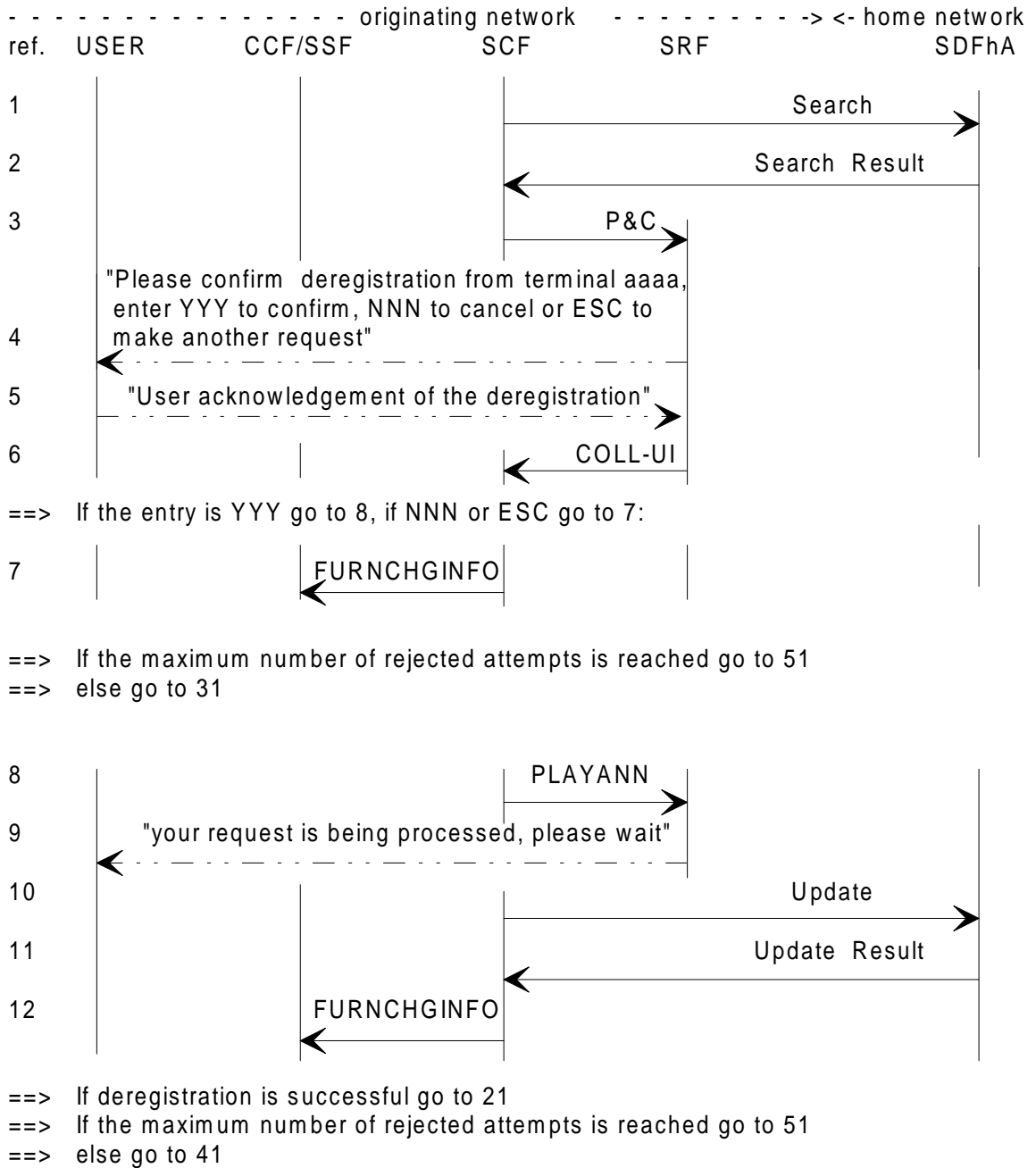
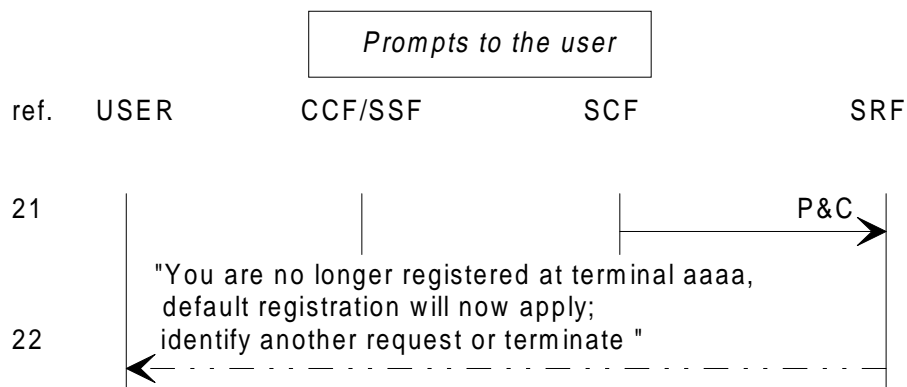
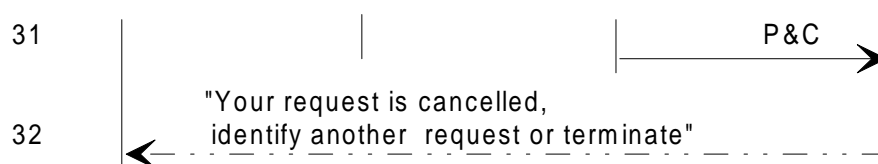


Figure 17: Prompts and deregistration for incoming calls

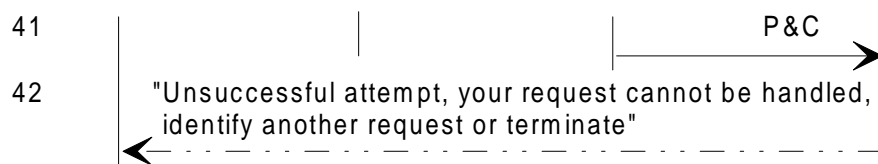


Logical output 1: ==> go to relevant procedure,  
 Logical output 2/3: ==> go to *Release of the calling user*

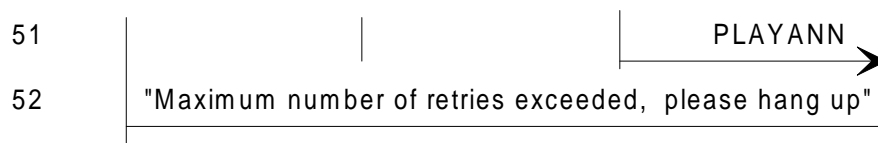
Cancelled or denied request



Logical output 1: ==> go to another procedure  
 Logical output 2/3: ==> go to *Release of the calling user*



Logical output 1: ==> go to another procedure  
 Logical output 2/3: ==> go to *Release of the calling user*



logical output 2/3: ==> go to *Release of the calling user*

NOTE: After any prompt the user may abandon: logical output 3, or not react within a given time: logical output 2.

**Figure 18: Prompts to the user**



## Notes on deregistration for incoming call.

IF ref.:

- 1,2: The data retrieval may be necessary to obtain the current registration of the user (to prompt the user accurately).
- 3-6: The user is prompted to confirm or cancel deregistration. User acknowledgement is received in the SCF.
- 7: The "FurnishChargingInformation" operation is sent to instruct SSF to update the record.
- 8-11: When the user validates the deregistration, the SDFhA is updated. A waiting prompt is given to the user.
- 12 : See 7.
- 21, 22 : SRF is ordered to give the user a positive acknowledgement. When deregistration is completed successfully, the user may want another UPT service (e.g. an outgoing call). For this purpose the user may make a new feature request.
- 31, 32: When deregistration is not confirmed by the user the user is requested to hang up or to make another feature request.
- 41, 42: When deregistration is not accepted by the home network for any reason e.g. no prior registration (if this has not been checked during **Feature request identification**), the user is requested to hang up or to make another feature request.
- 51, 52: The SRF prompts the user that the maximum number of rejected requests is reached. The count of the number of attempts is done in the SCF. The user is asked to hang up.

### 6.3 Reset for incoming calls

In phase 1 this feature is only provided by administrative procedures.

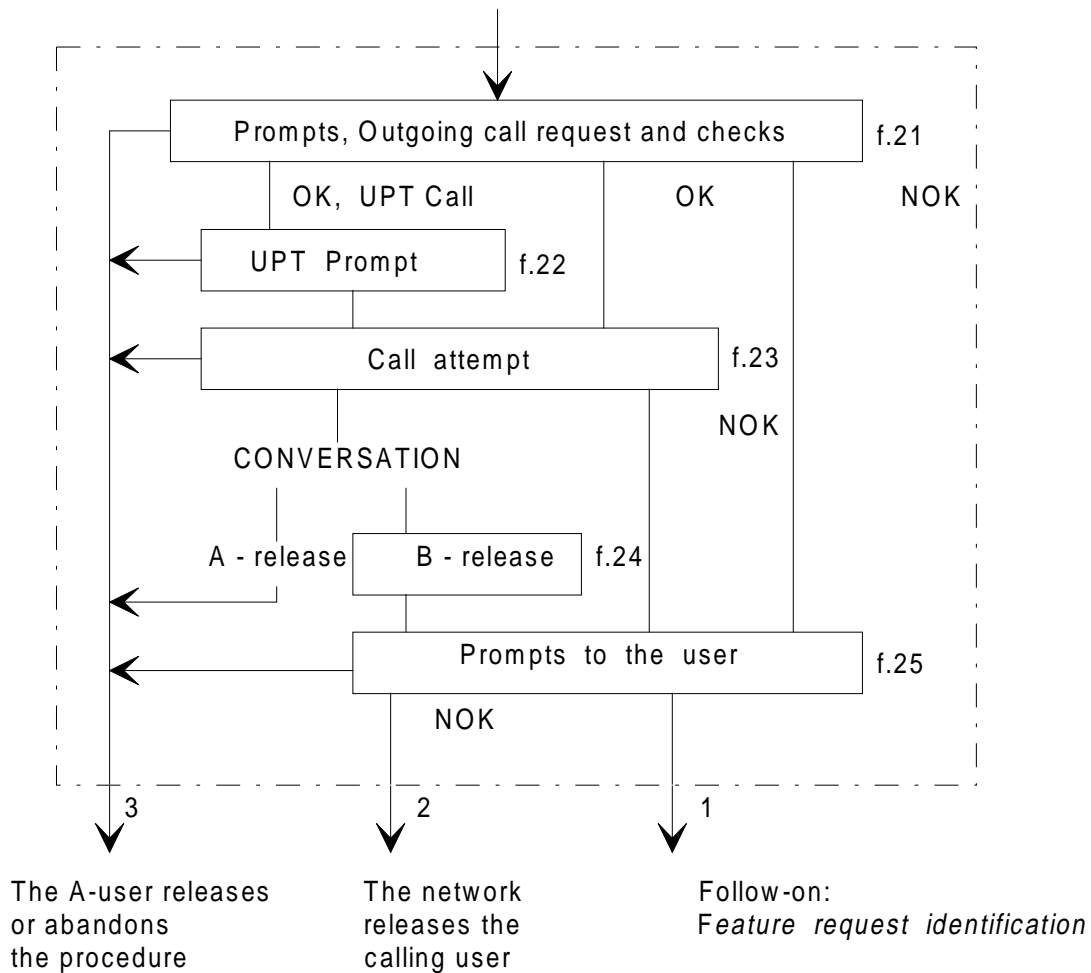
A call is made to the local UPT service provider who then handles the request off line.

## 7 Call handling

### 7.1 Outgoing UPT call

This is a call from a UPT user possibly roaming i.e. not registered in the network from where he/she is calling. The called number may be any number.

Prerequisite sequences: Access, identification and authentication  
Feature request identification



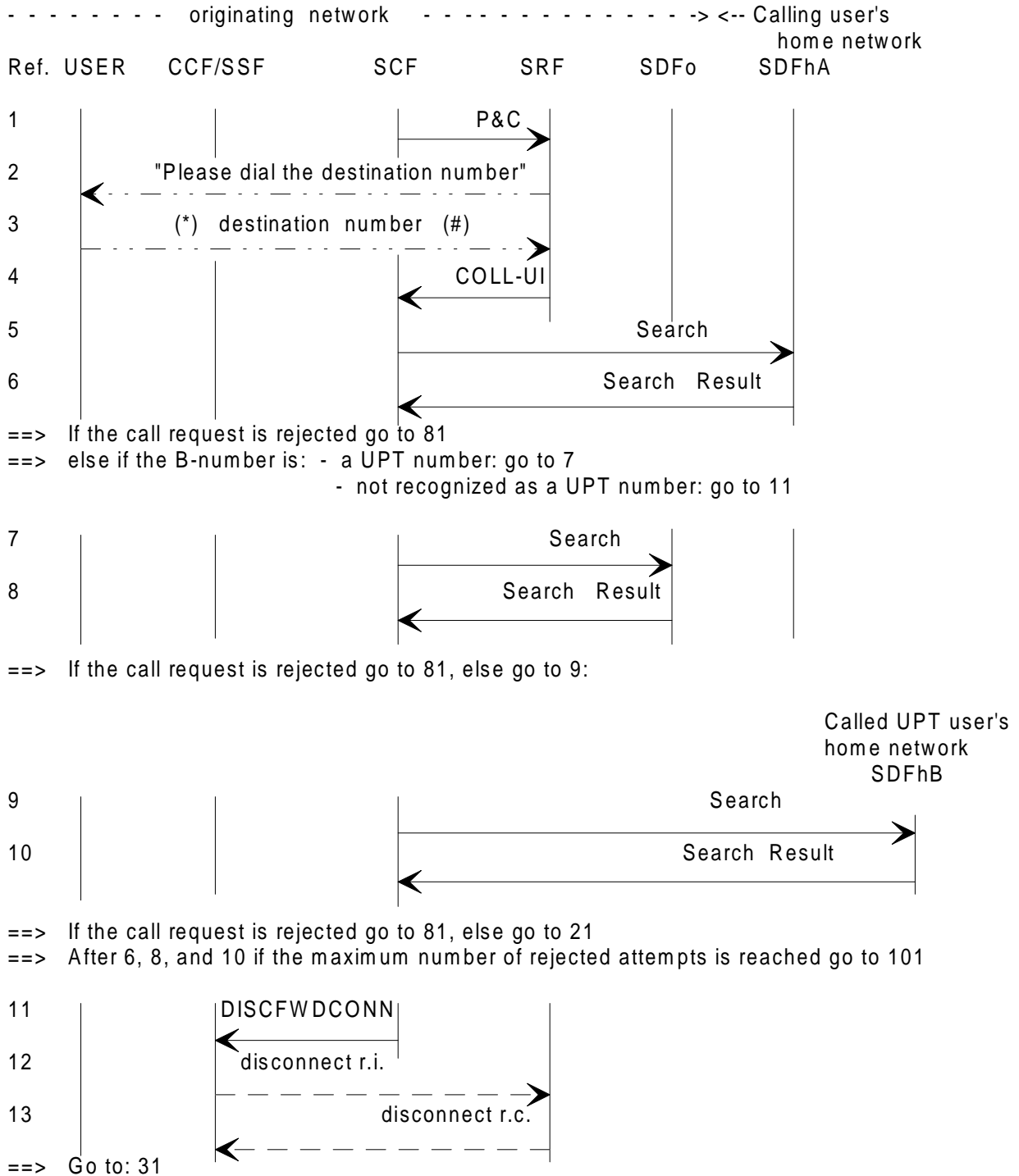
**Figure 19: Outgoing UPT call**

Prompts are given to the user according to allowed service options.

The logical outputs of the procedure are:

- 1) the user is allowed to request another feature (follow-on);
- 2) the user is released by the network after a prompt;
- 3) the user abandons the request before call set-up or hangs up during call set-up or conversation or while being prompted after call attempt.

Prompts, Outgoing call request and checks

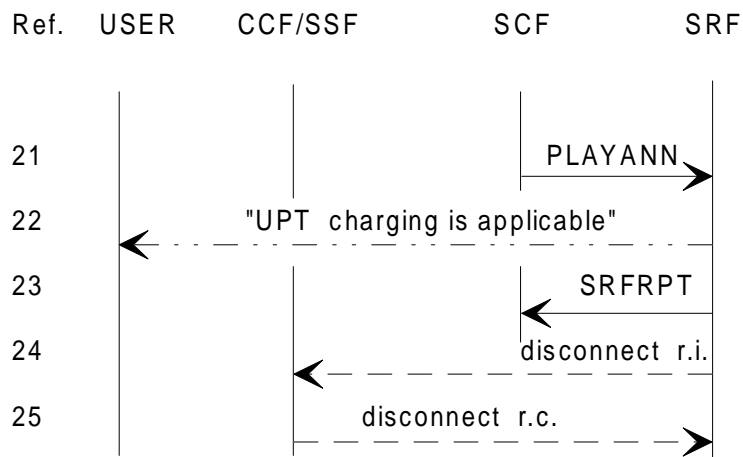


NOTE: Not recognized as a UPT number means:

- the B-number is not a UPT number;
- the B-number is a UPT number but the call will be routed over the B-user's home network; the B-user's location will be retrieved by the B-user's home network.

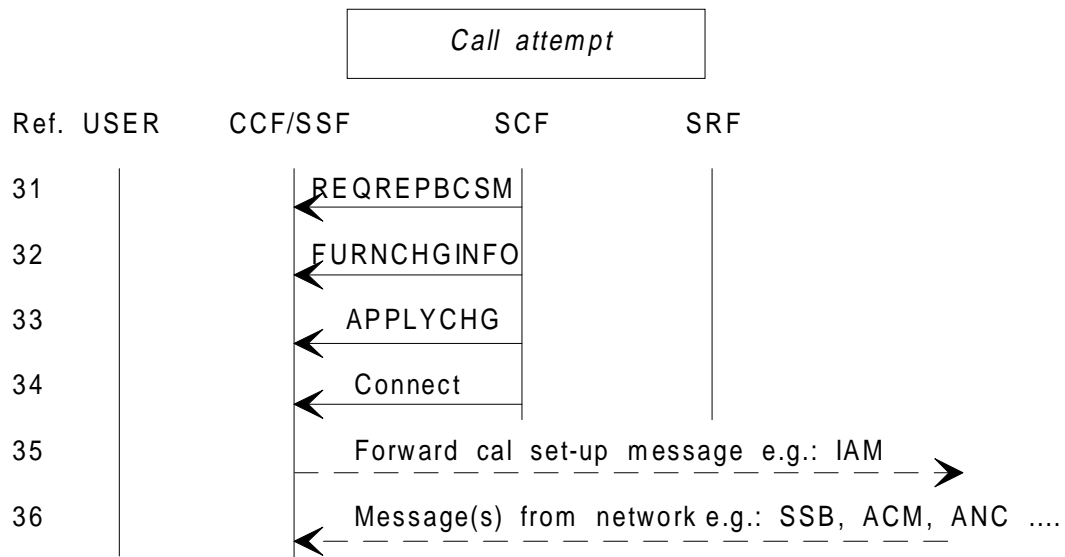
Figure 20: Prompts, Outgoing call request and checks

*UPT charging announcement to the user*



==> If the user hangs up, go to the *Release of the calling user* (figure 11)  
==> else go to 31

**Figure 21: UPT charging announcement**



==> On busy, congestion or no-answer go to 37

==> When call set-up is successful:

C O N V E R S A T I O N

The called user hangs up first: go to 51

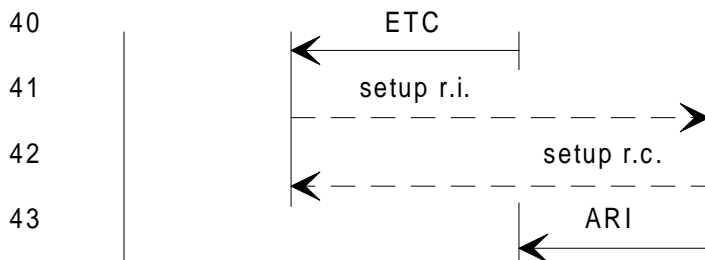
The calling user hangs up first: go to the *Release of the calling user* (figure 11)



==> On busy or no-answer go to 38, else go to 40



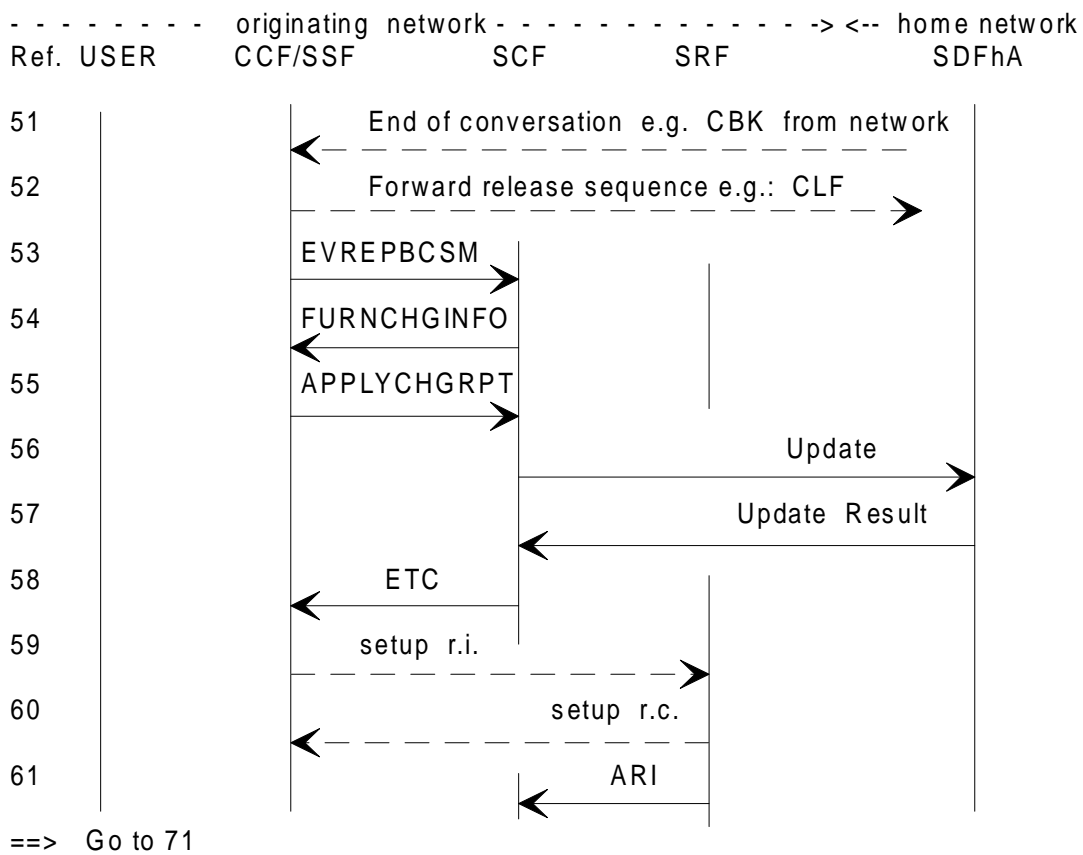
==> If call forwarding is activated, a redirected call attempt is made: go to 31, else go to 40



==> go to 91

**Figure 22: Call attempt**

B - release



**Figure 23: B-release with follow-on**



Notes on outgoing call.

IF ref.:

**Assumption:** The SCF recognizes UPT numbers and controls call set-up.

- 1-4: The B-number can be given in different ways, depending on networks. At most, the international significant number is required.
- The dialled number can be any number, also a UPT number. The digits are echoed (the user can abandon the procedure by hanging up).
- A flag (#) may be dialled to indicate the end of the destination number.
- The SRF sends the number sequence to the SCF.
- The B-number is analysed in the SCF.
- 5, 6: The SDFhA is queried to check if particular restrictions apply to the dialled number.
- 7, 8: SDFo is queried to check if there exist particular agreements between the local service provider and the called user's home provider for establishing outgoing calls.
- 9, 10: The SDFhB query is made to retrieve the location of the called user and the charging reference point.  
Particular restrictions may also be checked in SDFhB when necessary.
- 11-13: SSF is ordered to release the SRF.
- 21, 22: The user is informed that particular charging conditions may apply. The user is thus given the opportunity to abandon the call (for further study).
- 23-25: When the announcement is played, disconnection of the SRF takes place. (SRF initiated disconnection).
- 31: The SSF is required to suspend processing at given detection points (such as call-back after a successful call or on busy, congestion and no answer).
- 32: The "FurnishChargingInformation" operation is sent to instruct SSF to create a call record for the following call attempt.
- 33: "ApplyCharging" could also be sent. (This operation is not necessary if an earlier request is pending).
- 34: The SSF is required to set up the call.
- 35, 36: SSF routes the call accordingly and receives backward signalling.
- 37: When the call is unsuccessful the SCF is informed.
- The no answer event is generated by an application timer in the SSF.
- 38, 39: If a busy or no answer indication is received, a request is made to the B-user's home data base to check whether the call forwarding service is activated.
- If call forwarding is activated, the redirection address is retrieved and a new call attempt is made.



- 40-43: When the call set-up is unsuccessful or when the request is denied, it may be necessary to reconnect the SRF.
- Several SRF connection scenarios are possible as described in **Access and Prompts** (subclause 5.1).
- 51-53: The called party ends the conversation. SSF initiates an immediate disconnection sequence of the forward circuit. The disconnection sequence is network dependent.
- SSF reports to SCF.
- 54: The "FurnishChargingInformation" operation is sent to instruct SSF to update the record.
- NOTE: For the purpose of the follow-on, the creation of a new record is done when the user places a new request (see feature identification ref. 7).
- 55-57: Since an "ApplyCharging" has been issued, the record is returned to the SCF.
- The record is sent to the SDFhA and, in case of UPT to UPT call, to the SDFhB.
- This function needs further study.
- 58-61: To offer the follow-on, the SCF orders the SSF to reconnect an SRF.
- Several SRF connection scenarios are possible as described in **Access and Prompts** (subclause 5.1).
- 71, 72: SRF is ordered to prompt the calling user, which is given the opportunity to place another service request.
- 81: See 54.
- 82, 83: The calling user is informed that the dialled B-number is not authorized and is requested to hang up or to make another feature request.
- 91: See 54.
- 92, 93: The calling user is informed that the call is unsuccessful and is requested to hang up or to make another feature request.
- 101: The "FurnishChargingInformation" operation is sent to instruct SSF to update the record.
- 102,103: The SRF prompts the user that the maximum number of denied call attempts is reached. The count is done in the SCF.
- The user is asked to hang up.

7.2 Incoming UPT call

This procedure deals only with calls generated by "non-UPT users".

In the following it is assumed that a call to a UPT user is always controlled from the "first" network with UPT capabilities.

This network may be either the originating network or the called user's home network or another network.

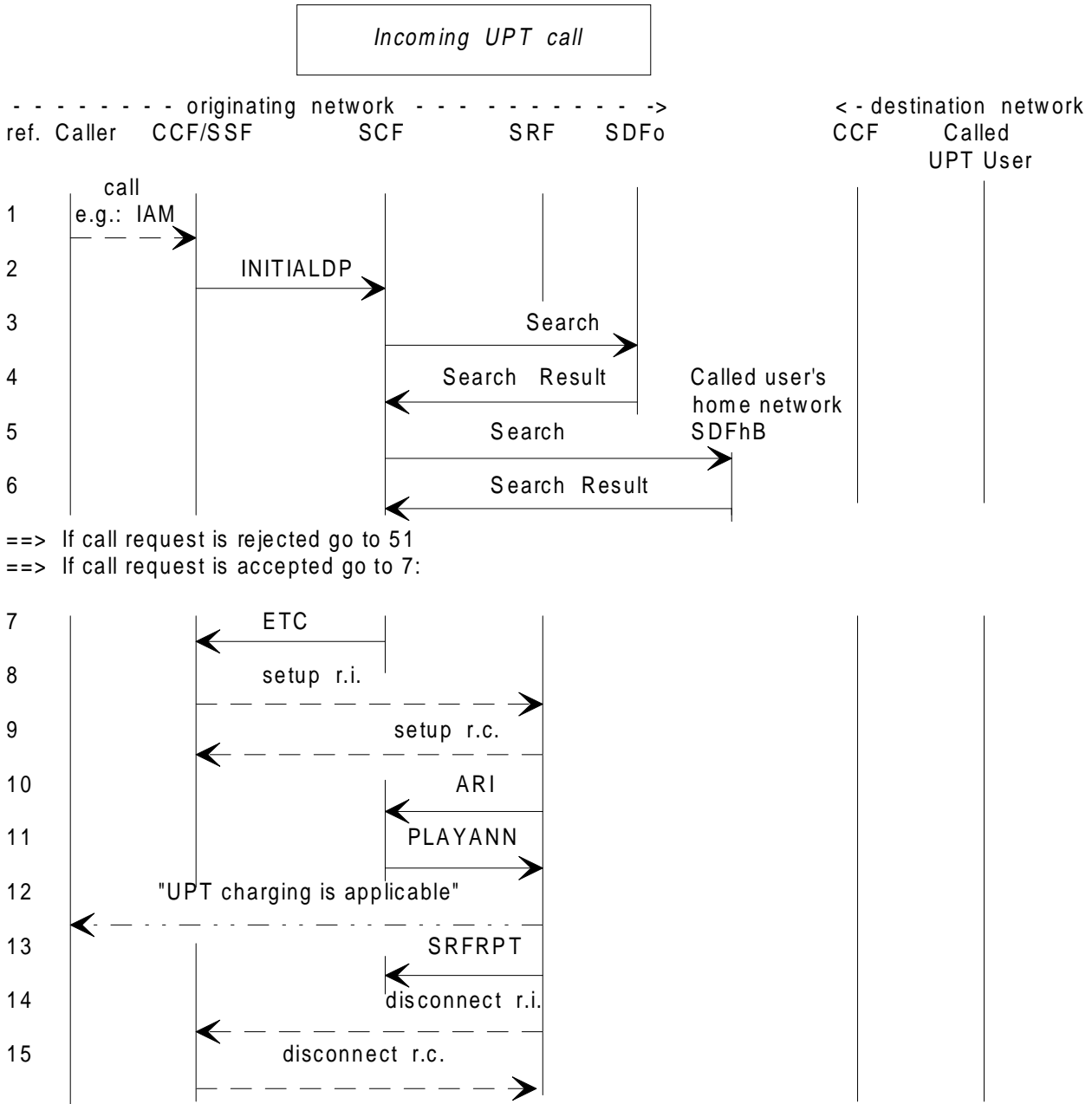
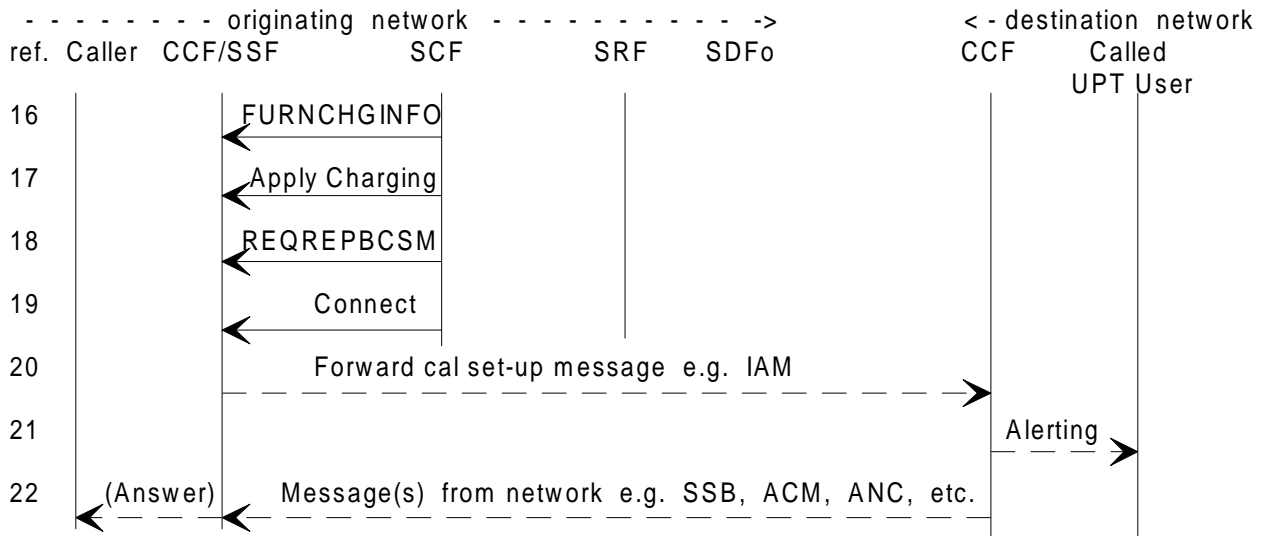


Figure 25 (sheet 1 of 3): Incoming UPT call

Incoming UPT call (cntd)



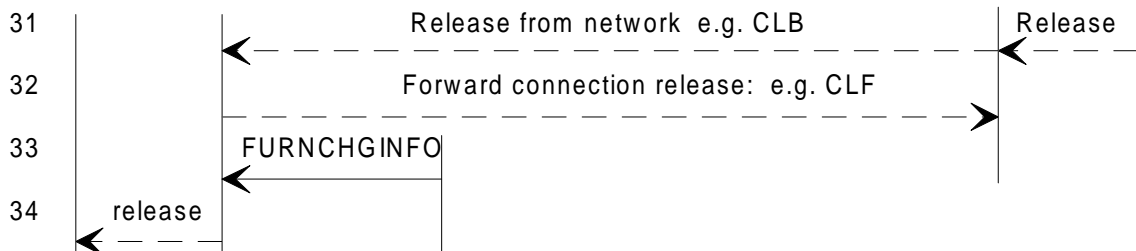
==> On busy, congestion or no answer go to 51

==> When call set-up is successful:

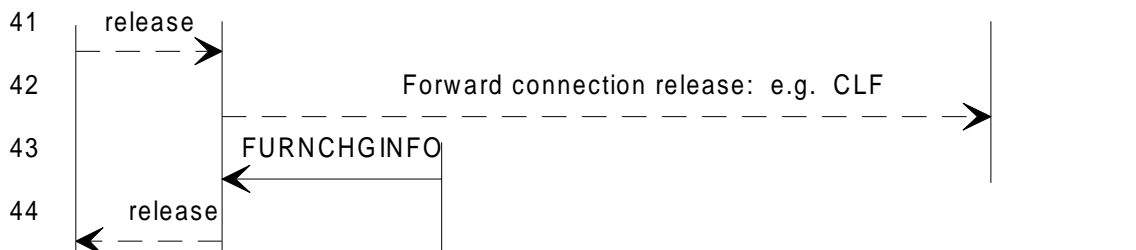
C O N V E R S A T I O N

The calling user hangs up first: go to 41

The called user hangs up first: go to 31:



==> If an APPLYCHGRPT is pending go to 45



==> If an APPLYCHGRPT is pending go to 45:

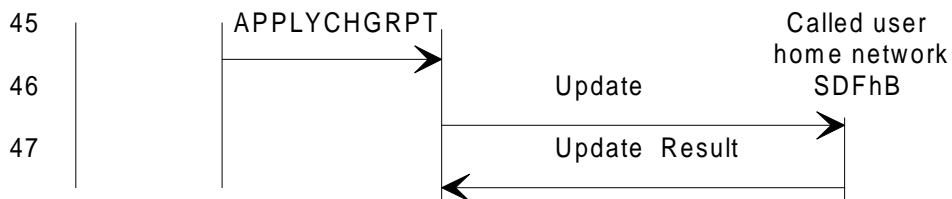


Figure 25 (sheet 2 of 3): Incoming UPT call

Incoming UPT call (cntd)

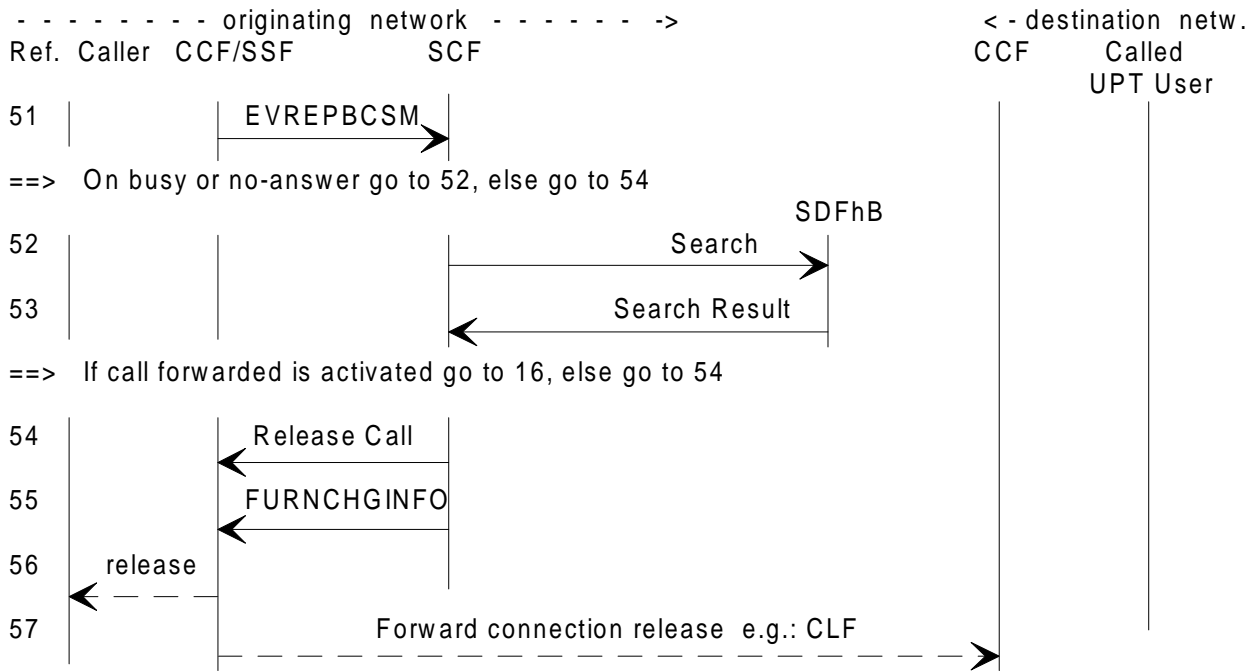


Figure 25 (sheet 3 of 3): Incoming UPT call

Notes on incoming call.

IF ref.:

- 1, 2: A received UPT number sequence triggers "Initial Detection Point".
- 3, 4: The SDFo is queried to check if there exists particular agreements between the local service provider and the called user's home provider for establishing incoming calls.
- 5, 6: The SDFhB query is made to retrieve the location of the called user and the charging reference point. Particular restrictions may also be checked in SDFhB when necessary.
- 7, 12: After a connection to SRF the calling user is informed on particular charging conditions that may apply.
- 13: SRF reports when the announcement is played through.
- 14, 15: Disconnection is initiated from SRF.

Several SRF connection scenarios are possible as described in Access and Prompts, subclause 2.1.

NOTE 1: The usefulness of sequence 7-15 needs further study.

- 16: The "FurnishChargingInformation" operation is sent to instruct SSF to create a call record for the following call event.

NOTE 2: FurnishChargingInformation is used if call record is generated at SSF. Alternatively "Apply Charging" may be used if the call record is generated at SCF.

- 17: Apply Charging may be necessary also to send metering pulses to the calling line.
- 18: SCF orders SSF to suspend call processing at given detection points (CLB, CLF).
- 19: SCF orders SSF to set up the call.
- 20, 21: In the destination network a call attempt is made towards the user.
- 22: The result is received in the controlling SSF.  
If the called user answers, this is received in SSF and sent backwards.
- 31: The call is terminated by the B party.
- 32-34: After a timing (for re-answer) both forward and backward connections are released (network dependent signalling).  
The "FurnishCharging" operation is sent to instruct the SSF to update the record.
- 41: The call is terminated by the A party.
- 42-44: The forward and backward connections are released and an appropriate signal is sent backwards.  
The "FurnishCharging" operation is sent to instruct the SSF to update the record.
- 45-47: When an "APPLYCHGRPT" is pending the record generated in the SSF/CCF is returned to the SCF and transferred to the SDFhB.  
Another record may also be sent to the originating network (SDFhA).
- 51: When the call is unsuccessful the SCF is informed.
- 52, 53: If a busy or no answer indication is received, a request is made to the B-user's home data base to check whether the call forwarding service is activated.  
If call forwarding is activated, the redirection address is retrieved and a new call attempt is made.
- 54-57: In the case of a rejected or unsuccessful call attempt SSF releases the connections in both directions with an appropriate signalling sequence (Network dependent).  
(In the case of a rejected call attempt SCF orders the release). The "FurnishCharging" operation is sent to instruct the SSF to update the record.

## 8 Service profile management

### 8.1 Service profile interrogation

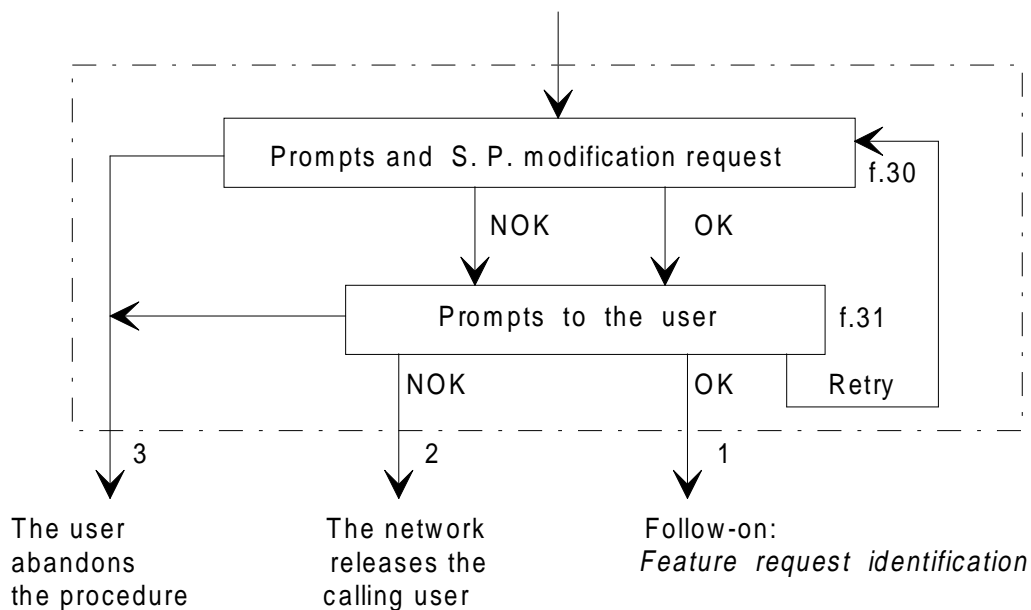
In phase 1, in visited networks no guiding prompts can be offered to the user. Thus this feature is only provided by administrative procedures.

The user makes a call to the home UPT service provider who then handles the request.

### 8.2 Service profile modification

Prerequisite sequences:           Access, identification and authentication  
  Feature request identification

The organization of the service profile modification sequence is given in the block diagram of figure 26.



**Figure 26: Service profile modification**

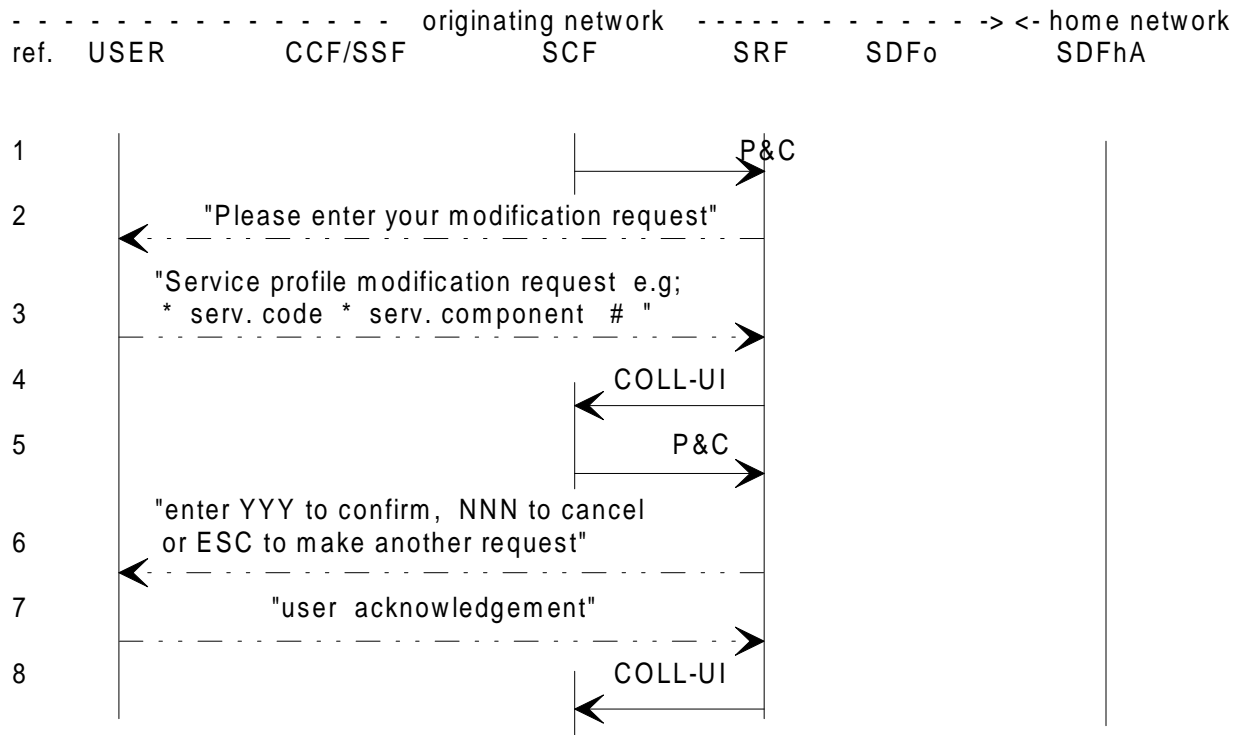
Prompts are given to the user according to allowed service options.

The logical outputs of the procedure are:

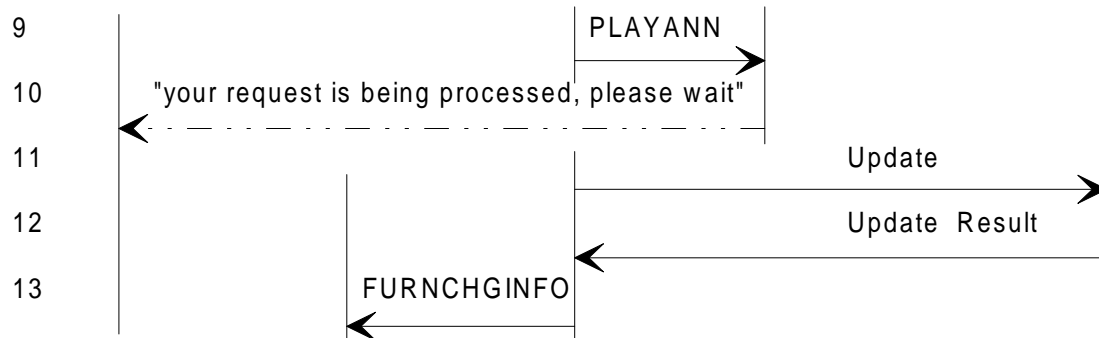
- 1) OK: the user is allowed to request another feature (follow-on);
- 2) NOK: the user is released by the network after a prompt (see note);
- 3) the user abandons the request (in any state).

NOTE: To prevent the service/network from being misused e.g. abnormal number of retries after a request rejection, the network may release the user. This function is carried out in the SCF.

Service profile modification



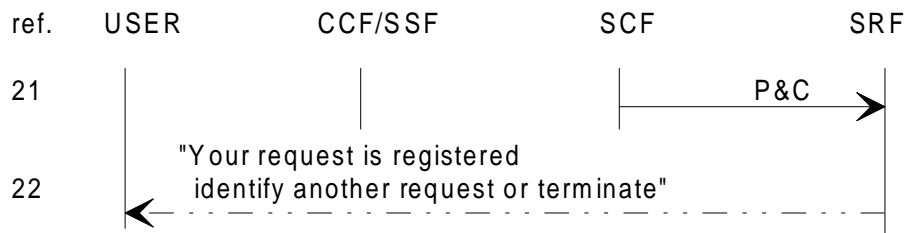
- ==> If the entry is YYY, go to 9
- ==> If the entry is NNN, go to 31
- ==> If the entry is ESC, go to 41
- ==> If the maximum number of rejected attempts is reached: go to 61



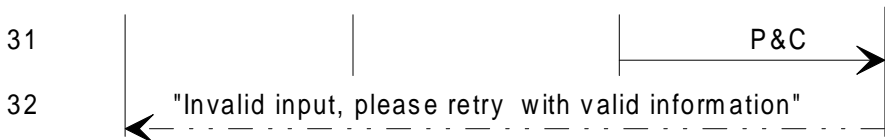
- ==> If service profile modification is successful: go to 21
- ==> else the user is offered to make another request: go to 51
- ==> If the maximum number of rejected attempts is reached: go to 61

**Figure 27: Service profile modification request**

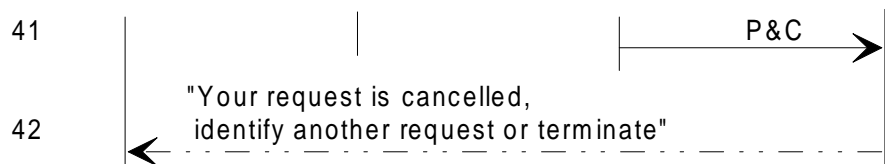
Prompts to the user



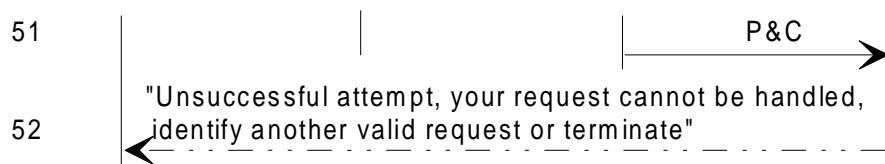
Logical output 1: ==> go to another procedure;  
Logical output 2/3: ==> go to *Release of the calling user*



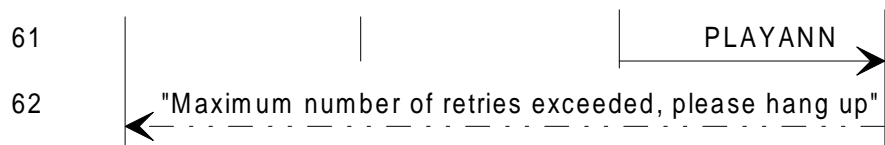
Retry: go to 3



Logical output 1: ==> go to another procedure  
Logical output 2/3: ==> go to *Release of the calling user*



Logical output 1: ==> go to another procedure  
Logical output 2/3: ==> go to *Release of the calling user*



Logical output 2/3: ==> go to *Release of the calling user*

Figure 28: Prompt to the user

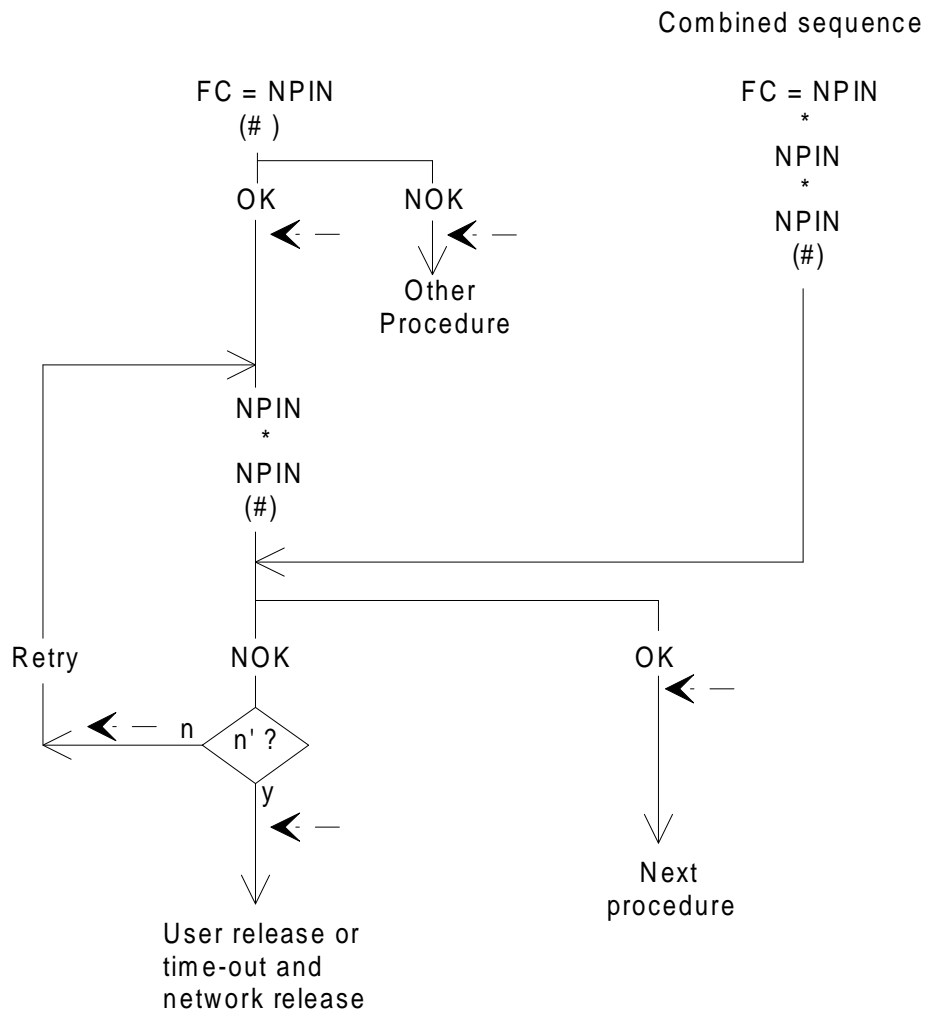


**Notes on service profile modification.**

IF ref.:

- 1-3: The user is prompted to enter the request which conforms to a specified structure.
- 4-6: The SRF is ordered to ask the user to confirm the request.
- 7,8: The user acknowledgement is required, received and sent to the SCF.
- 9-12: After user confirmation the service profile is updated in the home network.
- 13: The "FurnishChargingInformation" operation is sent to instruct SSF to update the record.
- 21, 22: Following to a successful request, the SRF is ordered to give the user a positive acknowledgement to the user who may require another UPT service (e.g. an outgoing call).  
  
For this purpose the user will make a new feature request.
- 31, 32: When the user cancels the entry (NNN entry), he/she is invited to make another try.
- 41, 42: When the request is cancelled by the user (ESC), he/she is requested to hang up or to make another feature request.
- 51, 52: When the request is denied, the user is offered to make another valid request or to terminate.
- 61, 62: The SRF prompts the user that the maximum number of rejected requests is reached. The count of the number of attempts is done in the SCF.  
  
The user is asked to hang up.

Annex A (informative): Procedures



- ◀ — = prompt to the user
- ( ) = character not mandatory
- OK/NOK = system check
- n' = maximum number of attempts, e.g. 2

Figure A.1: PIN change procedure

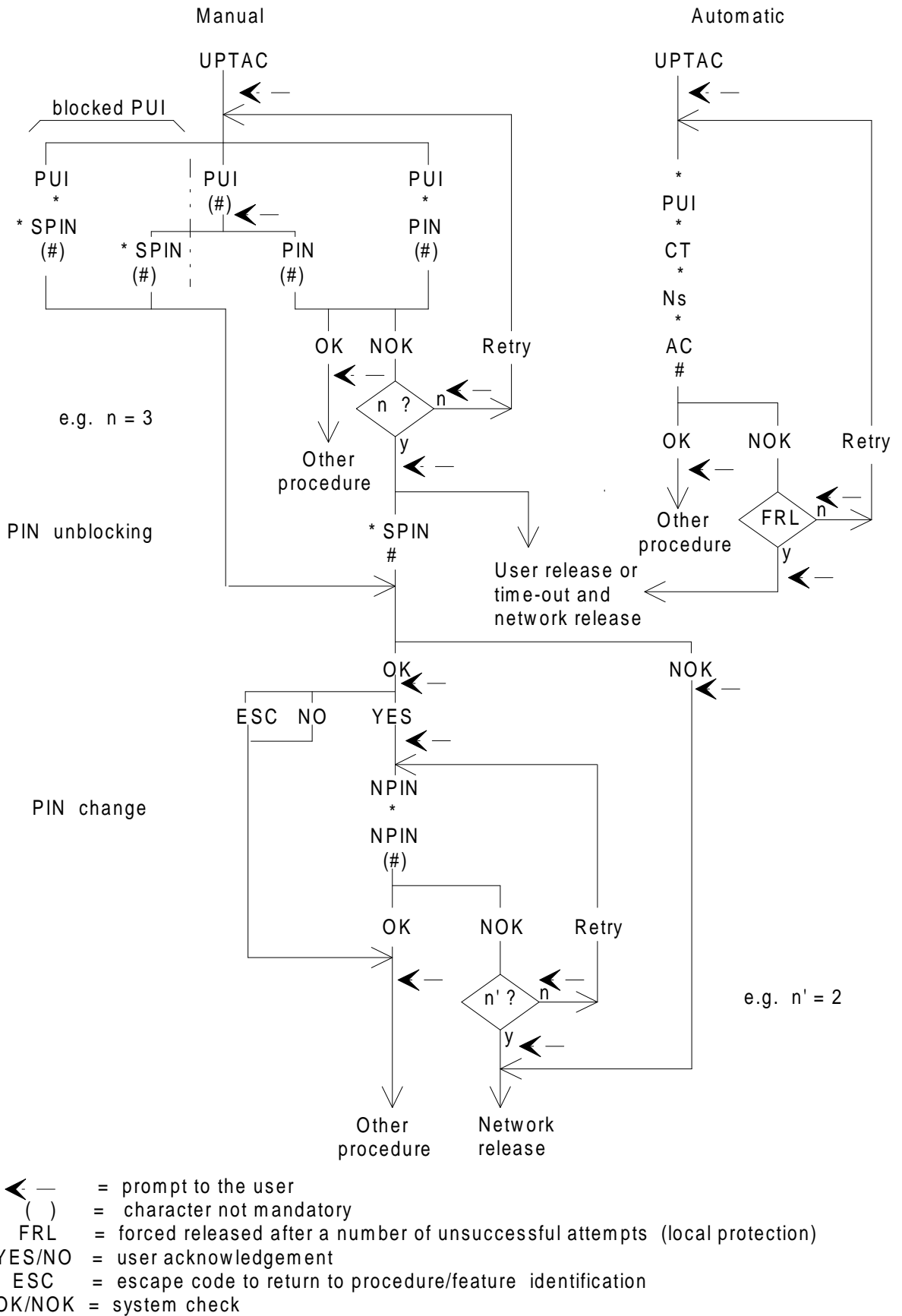


Figure A.2: Combined authentication, PIN unblocking and PIN change procedures



## History

Document history			
January 1995	Draft for endorsement by	TCC 20	1995-05-29 to 1995-05-31
June 1995	Final draft for approval by	TA 22	1995-06-19 to 1995-06-20
September 1995	First Edition		
March 1996	Converted into Adobe Acrobat Portable Document Format (PDF)		